

HIGHLIGHTS OF PRESCRIBING INFORMATION

These highlights do not include all the information needed to use ONTRUZANT safely and effectively. See full prescribing information for ONTRUZANT.

ONTRUZANT (trastuzumab-dttb) for injection, for intravenous use
Initial U.S. Approval: 2019

ONTRUZANT (trastuzumab-dttb) is biosimilar* to HERCEPTIN (trastuzumab)

WARNING: CARDIOMYOPATHY, INFUSION REACTIONS, EMBRYO-FETAL TOXICITY, and PULMONARY TOXICITY
See full prescribing information for complete boxed warning

Cardiomyopathy: trastuzumab products can result in subclinical and clinical cardiac failure manifesting as CHF, and decreased LVEF, with greatest risk when administered concurrently with anthracyclines. Evaluate cardiac function prior to and during treatment. Discontinue Ontruzant for cardiomyopathy. (2.3, 5.1)

Infusion Reactions, Pulmonary Toxicity: Discontinue Ontruzant for anaphylaxis, angioedema, interstitial pneumonitis, or acute respiratory distress syndrome. (5.2, 5.4)

Embryo-Fetal Toxicity: Exposure to trastuzumab products during pregnancy can result in oligohydramnios, in some cases complicated by pulmonary hypoplasia and neonatal death. Advise patients of these risks and the need for effective contraception. (5.3, 8.1, 8.3)

RECENT MAJOR CHANGES

Dosage and Administration (2.4) 03/2020
Dosage Forms and Strengths (3) 03/2020

INDICATIONS AND USAGE

Ontruzant is a HER2/neu receptor antagonist indicated for:

- The treatment of HER2-overexpressing breast cancer. (1.1, 1.2)
- The treatment of HER2-overexpressing metastatic gastric or gastroesophageal junction adenocarcinoma. (1.3)

Select patients for therapy based on an FDA-approved companion diagnostic for a trastuzumab product (1, 2.1).

DOSAGE AND ADMINISTRATION

For intravenous (IV) infusion only. Do not administer as an IV push or bolus. (2.2)

Do not substitute Ontruzant (trastuzumab-dttb) for or with ado-trastuzumab emtansine. (2.2)

Perform HER2 testing using FDA-approved tests by laboratories with demonstrated proficiency. (1, 2.1)

Adjuvant Treatment of HER2-Overexpressing Breast Cancer (2.2)

Administer at either:

- Initial dose of 4 mg/kg over 90 minute IV infusion, then 2 mg/kg over 30 minute IV infusion weekly for 12 weeks (with paclitaxel or docetaxel) or 18 weeks (with docetaxel and carboplatin). One week after the last weekly

dose of Ontruzant, administer 6 mg/kg as an IV infusion over 30 to 90 minutes every three weeks to complete a total of 52 weeks of therapy, or

- Initial dose of 8 mg/kg over 90 minutes IV infusion, then 6 mg/kg over 30 to 90 minutes IV infusion every three weeks for 52 weeks.

Metastatic HER2-Overexpressing Breast Cancer (2.2)

- Initial dose of 4 mg/kg as a 90 minute IV infusion followed by subsequent weekly doses of 2 mg/kg as 30 minute IV infusions.

Metastatic HER2-Overexpressing Gastric Cancer (2.2)

- Initial dose of 8 mg/kg over 90 minutes IV infusion, followed by 6 mg/kg over 30 to 90 minutes IV infusion every 3 weeks.

DOSAGE FORMS AND STRENGTHS

- For Injection: 150 mg lyophilized powder in a single-dose vial for reconstitution. (3)
- For Injection: 420 mg lyophilized powder in a multiple-dose vial for reconstitution. (3)

CONTRAINDICATIONS

- None. (4)

WARNINGS AND PRECAUTIONS

- Exacerbation of Chemotherapy-Induced Neutropenia. (5.5, 6.1)

ADVERSE REACTIONS

Adjuvant Breast Cancer

- Most common adverse reactions ($\geq 5\%$) are headache, diarrhea, nausea, and chills. (6.1)

Metastatic Breast Cancer

- Most common adverse reactions ($\geq 10\%$) are fever, chills, headache, infection, congestive heart failure, insomnia, cough, and rash. (6.1)

Metastatic Gastric Cancer

- Most common adverse reactions ($\geq 10\%$) are neutropenia, diarrhea, fatigue, anemia, stomatitis, weight loss, upper respiratory tract infections, fever, thrombocytopenia, mucosal inflammation, nasopharyngitis, and dysgeusia. (6.1)

To report SUSPECTED ADVERSE REACTIONS, contact Merck Sharp & Dohme Corp., a subsidiary of Merck & Co., Inc., at 1-877-888-4231 or FDA at 1-800-FDA-1088 or www.fda.gov/medwatch.

USE IN SPECIFIC POPULATIONS

Females and Males of Reproductive Potential: Verify the pregnancy status of females prior to initiation of Ontruzant (8.3).

See 17 for PATIENT COUNSELING INFORMATION.

* Biosimilar means that the biological product is approved based on data demonstrating that it is highly similar to an FDA-approved biological product, known as a reference product, and that there are no clinically meaningful differences between the biosimilar product and the reference product. Biosimilarity of Ontruzant has been demonstrated for the condition(s) of use (e.g. indication(s), dosing regimen(s)), strength(s), dosage form(s), and route(s) of administration described in its Full Prescribing Information.

Revised: 03/2020

FULL PRESCRIBING INFORMATION: CONTENTS*

WARNING: CARDIOMYOPATHY, INFUSION REACTIONS, EMBRYO-FETAL TOXICITY, and PULMONARY TOXICITY

1 INDICATIONS AND USAGE

- 1.1 Adjuvant Breast Cancer
- 1.2 Metastatic Breast Cancer
- 1.3 Metastatic Gastric Cancer

2 DOSAGE AND ADMINISTRATION

- 2.1 Patient Selection
- 2.2 Recommended Doses and Schedules
- 2.3 Important Dosing Considerations
- 2.4 Preparation for Administration

3 DOSAGE FORMS AND STRENGTHS

4 CONTRAINDICATIONS

5 WARNINGS AND PRECAUTIONS

- 5.1 Cardiomyopathy
- 5.2 Infusion Reactions
- 5.3 Embryo-Fetal Toxicity
- 5.4 Pulmonary Toxicity
- 5.5 Exacerbation of Chemotherapy-Induced Neutropenia

6 ADVERSE REACTIONS

- 6.1 Clinical Trials Experience

6.2 Immunogenicity

6.3 Post-Marketing Experience

7 DRUG INTERACTIONS

8 USE IN SPECIFIC POPULATIONS

8.1 Pregnancy

8.2 Lactation

8.3 Females and Males of Reproductive Potential

8.4 Pediatric Use

8.5 Geriatric Use

10 OVERDOSAGE

11 DESCRIPTION

12 CLINICAL PHARMACOLOGY

12.1 Mechanism of Action

12.2 Pharmacodynamics

12.3 Pharmacokinetics

13 NONCLINICAL TOXICOLOGY

13.1 Carcinogenesis, Mutagenesis, Impairment of Fertility

14 CLINICAL STUDIES

14.1 Adjuvant Breast Cancer

14.2 Metastatic Breast Cancer

14.3 Metastatic Gastric Cancer

16 HOW SUPPLIED/STORAGE AND HANDLING

16.1 How Supplied

16.2 Storage

17 PATIENT COUNSELING INFORMATION

* Sections or subsections omitted from the full prescribing information are not listed.

FULL PRESCRIBING INFORMATION

WARNING: CARDIOMYOPATHY, INFUSION REACTIONS, EMBRYO-FETAL TOXICITY, and PULMONARY TOXICITY

Cardiomyopathy

Administration of trastuzumab products can result in sub-clinical and clinical cardiac failure. The incidence and severity was highest in patients receiving trastuzumab with anthracycline-containing chemotherapy regimens.

Evaluate left ventricular function in all patients prior to and during treatment with Ontruzant. Discontinue Ontruzant treatment in patients receiving adjuvant therapy and withhold Ontruzant in patients with metastatic disease for clinically significant decrease in left ventricular function [see *Dosage and Administration (2.3) and Warnings and Precautions (5.1)*].

Infusion Reactions; Pulmonary Toxicity

Administration of trastuzumab products can result in serious and fatal infusion reactions and pulmonary toxicity. Symptoms usually occur during or within 24 hours of administration. Interrupt Ontruzant infusion for dyspnea or clinically significant hypotension. Monitor patients until symptoms completely resolve. Discontinue Ontruzant for anaphylaxis, angioedema, interstitial pneumonitis, or acute respiratory distress syndrome [see *Warnings and Precautions (5.2, 5.4)*].

Embryo-Fetal Toxicity

Exposure to trastuzumab products during pregnancy can result in oligohydramnios and oligohydramnios sequence manifesting as pulmonary hypoplasia, skeletal abnormalities, and neonatal death. Advise patients of these risks and the need for effective contraception [see *Warnings and Precautions (5.3) and Use in Specific Populations (8.1, 8.3)*].

1 INDICATIONS AND USAGE

1.1 Adjuvant Breast Cancer

Ontruzant is indicated for adjuvant treatment of HER2 overexpressing node positive or node negative (ER/PR negative or with one high risk feature [see *Clinical Studies (14.1)*]) breast cancer

- as part of a treatment regimen consisting of doxorubicin, cyclophosphamide, and either paclitaxel or docetaxel
- as part of a treatment regimen with docetaxel and carboplatin
- as a single agent following multi-modality anthracycline based therapy.

Select patients for therapy based on an FDA-approved companion diagnostic for a trastuzumab product [see *Dosage and Administration (2.1)*].

1.2 Metastatic Breast Cancer

Ontruzant is indicated:

- In combination with paclitaxel for first-line treatment of HER2-overexpressing metastatic breast cancer

- As a single agent for treatment of HER2-overexpressing breast cancer in patients who have received one or more chemotherapy regimens for metastatic disease.

Select patients for therapy based on an FDA-approved companion diagnostic for a trastuzumab product [see *Dosage and Administration (2.1)*].

1.3 Metastatic Gastric Cancer

Ontruzant is indicated, in combination with cisplatin and capecitabine or 5-fluorouracil, for the treatment of patients with HER2-overexpressing metastatic gastric or gastroesophageal junction adenocarcinoma who have not received prior treatment for metastatic disease.

Select patients for therapy based on an FDA-approved companion diagnostic for a trastuzumab product [see *Dosage and Administration (2.1)*].

2 DOSAGE AND ADMINISTRATION

2.1 Patient Selection

Select patients based on HER2 protein overexpression or HER2 gene amplification in tumor specimens [see *Indications and Usage (1) and Clinical Studies (14)*]. Assessment of HER2 protein overexpression and HER2 gene amplification should be performed using FDA-approved tests specific for breast or gastric cancers by laboratories with demonstrated proficiency. Information on the FDA-approved tests for the detection of HER2 protein overexpression and HER2 gene amplification is available at: <http://www.fda.gov/CompanionDiagnostics>.

Assessment of HER2 protein overexpression and HER2 gene amplification in metastatic gastric cancer should be performed using FDA-approved tests specifically for gastric cancers due to differences in gastric vs. breast histopathology, including incomplete membrane staining and more frequent heterogeneous expression of HER2 seen in gastric cancers.

Improper assay performance, including use of suboptimally fixed tissue, failure to utilize specified reagents, deviation from specific assay instructions, and failure to include appropriate controls for assay validation, can lead to unreliable results.

2.2 Recommended Doses and Schedules

- **Do not administer as an intravenous push or bolus. Do not mix Ontruzant with other drugs.**
- **Do not substitute Ontruzant (trastuzumab-dttb) for or with ado-trastuzumab emtansine.**

Adjuvant Treatment, Breast Cancer:

Administer according to one of the following doses and schedules for a total of 52 weeks of Ontruzant therapy:

During and following paclitaxel, docetaxel, or docetaxel and carboplatin:

- Initial dose of 4 mg/kg as an intravenous infusion over 90 minutes then at 2 mg/kg as an intravenous infusion over 30 minutes weekly during chemotherapy for the first 12 weeks (paclitaxel or docetaxel) or 18 weeks (docetaxel and carboplatin).

- One week following the last weekly dose of Ontruzant, administer Ontruzant at 6 mg/kg as an intravenous infusion over 30 to 90 minutes every three weeks.

As a single agent within three weeks following completion of multi-modality, anthracycline-based chemotherapy regimens:

- Initial dose at 8 mg/kg as an intravenous infusion over 90 minutes
- Subsequent doses at 6 mg/kg as an intravenous infusion over 30 to 90 minutes every three weeks [see *Dosage and Administration (2.3)*].
- Extending adjuvant treatment beyond one year is not recommended [see *Adverse Reactions (6.1)*].

Metastatic Treatment, Breast Cancer:

- Administer Ontruzant, alone or in combination with paclitaxel, at an initial dose of 4 mg/kg as a 90-minute intravenous infusion followed by subsequent once weekly doses of 2 mg/kg as 30-minute intravenous infusions until disease progression.

Metastatic Gastric Cancer:

- Administer Ontruzant at an initial dose of 8 mg/kg as a 90-minute intravenous infusion followed by subsequent doses of 6 mg/kg as an intravenous infusion over 30 to 90 minutes every three weeks until disease progression [see *Dosage and Administration (2.3)*].

2.3 Important Dosing Considerations

If the patient has missed a dose of Ontruzant by one week or less, then the usual maintenance dose (weekly schedule: 2 mg/kg; three-weekly schedule: 6 mg/kg) should be administered as soon as possible. Do not wait until the next planned cycle. Subsequent Ontruzant maintenance doses should be administered 7 days or 21 days later according to the weekly or three-weekly schedules, respectively.

If the patient has missed a dose of Ontruzant by more than one week, a re-loading dose of Ontruzant should be administered over approximately 90 minutes (weekly schedule: 4 mg/kg; three-weekly schedule: 8 mg/kg) as soon as possible. Subsequent Ontruzant maintenance doses (weekly schedule: 2 mg/kg; three-weekly schedule 6 mg/kg) should be administered 7 days or 21 days later according to the weekly or three-weekly schedules, respectively.

Infusion Reactions

[see *Boxed Warning, Warnings and Precautions (5.2)*]

- Decrease the rate of infusion for mild or moderate infusion reactions
- Interrupt the infusion in patients with dyspnea or clinically significant hypotension
- Discontinue Ontruzant for severe or life-threatening infusion reactions.

Cardiomyopathy

[see *Boxed Warning, Warnings and Precautions (5.1)*]

Assess left ventricular ejection fraction (LVEF) prior to initiation of Ontruzant and at regular intervals during treatment. Withhold Ontruzant dosing for at least 4 weeks for either of the following:

- $\geq 16\%$ absolute decrease in LVEF from pre-treatment values
- LVEF below institutional limits of normal and $\geq 10\%$ absolute decrease in LVEF from pretreatment values.

Ontruzant may be resumed if, within 4 to 8 weeks, the LVEF returns to normal limits and the absolute decrease from baseline is $\leq 15\%$.

Permanently discontinue Ontruzant for a persistent (> 8 weeks) LVEF decline or for suspension of Ontruzant dosing on more than 3 occasions for cardiomyopathy.

2.4 Preparation for Administration

To prevent medication errors, it is important to check the vial labels to ensure that the drug being prepared and administered is Ontruzant (trastuzumab-dttb) and not ado-trastuzumab emtansine.

420 mg Multiple-dose vial

Reconstitution: Reconstitute each 420 mg vial of Ontruzant with 20 mL of Bacteriostatic Water for Injection (BWFI), USP, containing 1.1% benzyl alcohol as a preservative to yield a multiple-dose solution containing 21 mg/mL trastuzumab-dttb that delivers 20 mL (420 mg trastuzumab-dttb). In patients with known hypersensitivity to benzyl alcohol, reconstitute with 20 mL of Sterile Water for Injection (SWFI) without preservative to yield a single use solution.

Use appropriate aseptic technique when performing the following reconstitution steps:

- Using a sterile syringe, slowly inject the 20 mL of diluent into the vial containing the lyophilized powder of Ontruzant, which has a cake-like appearance. The stream of diluent should be directed into the cake. The reconstituted vial yields a solution for multiple-dose use, containing 21 mg/mL trastuzumab-dttb.
- Swirl the vial gently to aid reconstitution. **DO NOT SHAKE.**
- Slight foaming of the product may be present upon reconstitution. Allow the vial to stand undisturbed for approximately 5 minutes.
- Parenteral drug products should be inspected visually for particulate matter and discoloration prior to administration, whenever solution and container permit. Inspect visually for particulates and discoloration. The solution should be free of visible particulates, clear to slightly opalescent and colorless to pale yellow.
- Store reconstituted Ontruzant in the refrigerator at 2° to 8°C (36° to 46°F); discard unused Ontruzant after 28 days. If Ontruzant is reconstituted with SWFI without preservative, use immediately and discard any unused portion. Do not freeze.

Dilution:

- Determine the dose (mg) of Ontruzant [*see Dosage and Administration (2.2)*]. Calculate the volume of the 21 mg/mL reconstituted Ontruzant solution needed, withdraw this amount from the vial and add it to an infusion bag containing 250 mL of 0.9% Sodium Chloride Injection, USP. **DO NOT USE DEXTROSE (5%) SOLUTION.**
- Gently invert the bag to mix the solution.
- The solution of Ontruzant for infusion diluted in polyvinylchloride or polyethylene bags containing 0.9% Sodium Chloride Injection, USP, should be stored at 2° to 8°C (36° to 46°F) for no more than 24 hours prior to use. **Do not freeze.**

150 mg Single-dose vial

Reconstitution: Reconstitute each 150 mg vial of Ontruzant with 7.4 mL of Sterile Water for

Injection (SWFI) (not supplied) to yield a single-dose solution containing 21 mg/mL trastuzumab-dttb that delivers 7.15 mL (150 mg trastuzumab-dttb).

Use appropriate aseptic technique when performing the following reconstitution steps:

- Using a sterile syringe, slowly inject 7.4 mL of SWFI (not supplied) into the vial containing the lyophilized powder of Ontruzant, which has a cake-like appearance. The stream of diluent should be directed into the cake. The reconstituted vial yields a solution for single-dose use, containing 21 mg/mL trastuzumab-dttb.
- Gently swirl and invert the vial to aid reconstitution. **DO NOT SHAKE.**
- Slight foaming of the product may be present upon reconstitution. Allow the vial to stand undisturbed for approximately 5 minutes.
- Parenteral drug products should be inspected visually for particulate matter and discoloration prior to administration, whenever solution and container permit. Inspect visually for particulates and discoloration. The solution should be free of visible particulates, clear to slightly opalescent and colorless to pale yellow.
- Use the Ontruzant solution immediately following reconstitution with SWFI, as it contains no preservative and is intended for single-dose only. If not used immediately, store the reconstituted Ontruzant solution for up to 24 hours at 2° to 8°C (36° to 46°F); discard any unused Ontruzant after 24 hours. **Do not freeze.**

Dilution:

- Determine the dose (mg) of Ontruzant [*see Dosage and Administration (2.1)*].
- Calculate the volume of the 21 mg/mL reconstituted Ontruzant solution needed
- Withdraw this amount from the vial and add it to an infusion bag containing 250 mL of 0.9% Sodium Chloride Injection, USP. **DO NOT USE DEXTROSE (5%) SOLUTION.**
- Gently invert the bag to mix the solution.
- The solution of Ontruzant for infusion diluted in polyvinylchloride or polyethylene bags containing 0.9% Sodium Chloride Injection, USP, should be stored at 2° to 8°C (36° to 46°F) for no more than 24 hours prior to use. Discard after 24 hours. This storage time is additional to the time allowed for the reconstituted vials. **Do not freeze.**

3 DOSAGE FORMS AND STRENGTHS

- For injection: 150 mg of Ontruzant as a white to pale yellow, preservative-free lyophilized powder in a single-dose vial.
- For injection: 420 mg of Ontruzant as a white to pale yellow, preservative-free lyophilized powder in a multiple-dose vial.

4 CONTRAINDICATIONS

None.

5 WARNINGS AND PRECAUTIONS

5.1 Cardiomyopathy

Trastuzumab products can cause left ventricular cardiac dysfunction, arrhythmias, hypertension,

disabling cardiac failure, cardiomyopathy, and cardiac death [see *Boxed Warning: Cardiomyopathy*]. Trastuzumab products can also cause asymptomatic decline in left ventricular ejection fraction (LVEF).

There is a 4 to 6 fold increase in the incidence of symptomatic myocardial dysfunction among patients receiving trastuzumab products as a single agent or in combination therapy compared with those not receiving trastuzumab products. The highest absolute incidence occurs when a trastuzumab product is administered with an anthracycline.

Withhold Ontruzant for $\geq 16\%$ absolute decrease in LVEF from pre-treatment values or an LVEF value below institutional limits of normal and $\geq 10\%$ absolute decrease in LVEF from pretreatment values [see *Dosage and Administration (2.3)*]. The safety of continuation or resumption of Ontruzant in patients with trastuzumab product-induced left ventricular cardiac dysfunction has not been studied.

Patients who receive anthracycline after stopping Ontruzant may also be at increased risk of cardiac dysfunction [see *Drug Interactions (7) and Clinical Pharmacology (12.3)*].

Cardiac Monitoring: Conduct thorough cardiac assessment, including history, physical examination, and determination of LVEF by echocardiogram or MUGA scan. The following schedule is recommended:

- Baseline LVEF measurement immediately prior to initiation of Ontruzant
- LVEF measurements every 3 months during and upon completion of Ontruzant
- Repeat LVEF measurement at 4 week intervals if Ontruzant is withheld for significant left ventricular cardiac dysfunction [see *Dosage and Administration (2.3)*]
- LVEF measurements every 6 months for at least 2 years following completion of Ontruzant as a component of adjuvant therapy.

In Study 1, 15% (158/1031) of patients discontinued trastuzumab due to clinical evidence of myocardial dysfunction or significant decline in LVEF after a median follow-up duration of 8.7 years in the AC-TH (anthracycline, cyclophosphamide, paclitaxel, and trastuzumab) arm. In Study 3 (one-year trastuzumab treatment), the number of patients who discontinued trastuzumab due to cardiac toxicity at 12.6 months median duration of follow-up was 2.6% (44/1678). In Study 4, a total of 2.9% (31/1056) of patients in the TCH (docetaxel, carboplatin, trastuzumab) arm (1.5% during the chemotherapy phase and 1.4% during the monotherapy phase) and 5.7% (61/1068) of patients in the AC-TH arm (1.5% during the chemotherapy phase and 4.2% during the monotherapy phase) discontinued trastuzumab due to cardiac toxicity.

Among 64 patients receiving adjuvant chemotherapy (Studies 1 and 2) who developed congestive heart failure, one patient died of cardiomyopathy, one patient died suddenly without documented etiology, and 33 patients were receiving cardiac medication at last follow-up. Approximately 24% of the surviving patients had recovery to a normal LVEF (defined as $\geq 50\%$) and no symptoms on continuing medical management at the time of last follow-up. Incidence of congestive heart failure (CHF) is presented in Table 1. The safety of continuation or resumption of Ontruzant in patients with trastuzumab product-induced left ventricular cardiac dysfunction has not been studied.

Table 1
Incidence of Congestive Heart Failure in Adjuvant Breast Cancer Studies

Study	Regimen	Incidence of CHF	
		Trastuzumab	Control
1 & 2 ^a	AC ^b → Paclitaxel + Trastuzumab	3.2% (64/2000) ^c	1.3% (21/1655)
3 ^d	Chemo → Trastuzumab	2% (30/1678)	0.3% (5/1708)
4	AC ^b → Docetaxel + Trastuzumab	2% (20/1068)	0.3% (3/1050)
4	Docetaxel + Carbo + Trastuzumab	0.4% (4/1056)	0.3% (3/1050)

^a Median follow-up duration for studies 1 and 2 combined was 8.3 years in the AC → TH arm.

^b Anthracycline (doxorubicin) and cyclophosphamide.

^c Includes 1 patient with fatal cardiomyopathy and 1 patient with sudden death without documented etiology.

^d Includes NYHA II-IV and cardiac death at 12.6 months median duration of follow-up in the one-year trastuzumab arm.

In Study 3 (one-year trastuzumab treatment), at a median follow-up duration of 8 years, the incidence of severe CHF (NYHA III & IV) was 0.8%, and the rate of mild symptomatic and asymptomatic left ventricular dysfunction was 4.6%.

Table 2
Incidence of Cardiac Dysfunction^a in Metastatic Breast Cancer Studies

Study	Event	Incidence			
		NYHA I-IV		NYHA III-IV	
		Trastuzumab	Control	Trastuzumab	Control
5 (AC) ^b	Cardiac Dysfunction	28%	7%	19%	3%
5 (paclitaxel)	Cardiac Dysfunction	11%	1%	4%	1%
6	Cardiac Dysfunction ^c	7%	N/A	5%	N/A

^a Congestive heart failure or significant asymptomatic decrease in LVEF.

^b Anthracycline (doxorubicin or epirubicin) and cyclophosphamide.

^c Includes 1 patient with fatal cardiomyopathy.

In Study 4, the incidence of NCI-CTC Grade 3/4 cardiac ischemia/infarction was higher in the trastuzumab containing regimens (AC-TH: 0.3% (3/1068) and TCH: 0.2% (2/1056)) as compared to none in AC-T.

5.2 Infusion Reactions

Infusion reactions consist of a symptom complex characterized by fever and chills, and on occasion included nausea, vomiting, pain (in some cases at tumor sites), headache, dizziness, dyspnea, hypotension, rash, and asthenia [*see Adverse Reactions (6.1)*].

In post-marketing reports, serious and fatal infusion reactions have been reported. Severe reactions, which include bronchospasm, anaphylaxis, angioedema, hypoxia, and severe hypotension, were usually reported during or immediately following the initial infusion. However, the onset and clinical course were variable, including progressive worsening, initial improvement followed by clinical deterioration, or delayed post-infusion events with rapid clinical deterioration. For fatal events, death occurred within hours to days following a serious infusion reaction.

Interrupt Ontruzant infusion in all patients experiencing dyspnea, clinically significant hypotension, and intervention of medical therapy administered (which may include epinephrine, corticosteroids, diphenhydramine, bronchodilators, and oxygen). Patients should be evaluated and carefully monitored until complete resolution of signs and symptoms. Permanent discontinuation should be strongly considered in all patients with severe infusion reactions.

There are no data regarding the most appropriate method of identification of patients who may safely be retreated with trastuzumab products after experiencing a severe infusion reaction. Prior to resumption of trastuzumab infusion, the majority of patients who experienced a severe infusion reaction were pre-medicated with antihistamines and/or corticosteroids. While some patients tolerated trastuzumab infusions, others had recurrent severe infusion reactions despite pre-medications.

5.3 Embryo-Fetal Toxicity

Trastuzumab products can cause fetal harm when administered to a pregnant woman. In post-marketing reports, use of trastuzumab during pregnancy resulted in cases of oligohydramnios and oligohydramnios sequence manifesting as pulmonary hypoplasia, skeletal abnormalities, and neonatal death.

Verify the pregnancy status of females of reproductive potential prior to the initiation of Ontruzant. Advise pregnant women and females of reproductive potential that exposure to Ontruzant during pregnancy or within 7 months prior to conception can result in fetal harm. Advise females of reproductive potential to use effective contraception during treatment and for 7 months following the last dose of Ontruzant [*see Use in Specific Populations (8.1, 8.3) and Clinical Pharmacology (12.3)*].

5.4 Pulmonary Toxicity

Trastuzumab product use can result in serious and fatal pulmonary toxicity. Pulmonary toxicity includes dyspnea, interstitial pneumonitis, pulmonary infiltrates, pleural effusions, non-cardiogenic pulmonary edema, pulmonary insufficiency and hypoxia, acute respiratory distress syndrome, and pulmonary fibrosis. Such events can occur as sequelae of infusion reactions [*see Warnings and Precautions (5.2)*]. Patients with symptomatic intrinsic lung disease or with extensive tumor involvement of the lungs, resulting in dyspnea at rest, appear to have more severe toxicity.

5.5 Exacerbation of Chemotherapy-Induced Neutropenia

In randomized, controlled clinical trials, the per-patient incidences of NCI-CTC Grade 3 to 4 neutropenia and of febrile neutropenia were higher in patients receiving trastuzumab in combination with myelosuppressive chemotherapy as compared to those who received chemotherapy alone. The incidence of septic death was similar among patients who received trastuzumab and those who did not [*see Adverse Reactions (6.1)*].

6 ADVERSE REACTIONS

The following adverse reactions are discussed in greater detail in other sections of the label:

- Cardiomyopathy [*see Warnings and Precautions (5.1)*]
- Infusion Reactions [*see Warnings and Precautions (5.2)*]

- Embryo-Fetal Toxicity [*see Warnings and Precautions (5.3)*]
- Pulmonary Toxicity [*see Warnings and Precautions (5.4)*]
- Exacerbation of Chemotherapy-induced Neutropenia [*see Warnings and Precautions (5.5)*]

The most common adverse reactions in patients receiving trastuzumab products in the adjuvant and metastatic breast cancer setting are fever, nausea, vomiting, infusion reactions, diarrhea, infections, increased cough, headache, fatigue, dyspnea, rash, neutropenia, anemia, and myalgia. Adverse reactions requiring interruption or discontinuation of trastuzumab product treatment include CHF, significant decline in left ventricular cardiac function, severe infusion reactions, and pulmonary toxicity [*see Dosage and Administration (2.3)*].

In the metastatic gastric cancer setting, the most common adverse reactions ($\geq 10\%$) that were increased ($\geq 5\%$ difference) in the patients receiving trastuzumab as compared to patients receiving chemotherapy alone were neutropenia, diarrhea, fatigue, anemia, stomatitis, weight loss, upper respiratory tract infections, fever, thrombocytopenia, mucosal inflammation, nasopharyngitis, and dysgeusia. The most common adverse reactions which resulted in discontinuation of trastuzumab treatment in the absence of disease progression were infection, diarrhea, and febrile neutropenia.

6.1 Clinical Trials Experience

Because clinical trials are conducted under widely varying conditions, adverse reaction rates observed in the clinical trials of a drug cannot be directly compared to rates in the clinical trials of another drug and may not reflect the rates observed in practice.

Adjuvant Breast Cancer Studies

The data below reflect exposure to one-year trastuzumab therapy across three randomized, open-label studies, Studies 1, 2, and 3, with (n = 3678) or without (n = 3363) trastuzumab in the adjuvant treatment of breast cancer.

The data summarized in Table 3 below, from Study 3, reflect exposure to trastuzumab in 1678 patients; the median treatment duration was 51 weeks and median number of infusions was 18. Among the 3386 patients enrolled in the observation and one-year trastuzumab arms of Study 3 at a median duration of follow-up of 12.6 months in the trastuzumab arm, the median age was 49 years (range: 21 to 80 years), 83% of patients were Caucasian, and 13% were Asian.

Table 3
Adverse Reactions for Study 3^a, All Grades^b

Adverse Reaction	One year Trastuzumab (n = 1678)	Observation (n = 1708)
<u>Cardiac</u>		
Hypertension	64 (4%)	35 (2%)
Dizziness	60 (4%)	29 (2%)
Ejection Fraction Decreased	58 (3.5%)	11 (0.6%)
Palpitations	48 (3%)	12 (0.7%)
Cardiac Arrhythmias ^c	40 (3%)	17 (1%)
Cardiac Failure Congestive	30 (2%)	5 (0.3%)
Cardiac Failure	9 (0.5%)	4 (0.2%)
Cardiac Disorder	5 (0.3%)	0 (0%)
Ventricular Dysfunction	4 (0.2%)	0 (0%)
<u>Respiratory Thoracic Mediastinal Disorders</u>		
Cough	81 (5%)	34 (2%)
Influenza	70 (4%)	9 (0.5%)
Dyspnea	57 (3%)	26 (2%)
URI	46 (3%)	20 (1%)
Rhinitis	36 (2%)	6 (0.4%)
Pharyngolaryngeal Pain	32 (2%)	8 (0.5%)
Sinusitis	26 (2%)	5 (0.3%)
Epistaxis	25 (2%)	1 (0.06%)
Pulmonary Hypertension	4 (0.2%)	0 (0%)
Interstitial Pneumonitis	4 (0.2%)	0 (0%)
<u>Gastrointestinal Disorders</u>		
Diarrhea	123 (7%)	16 (1%)
Nausea	108 (6%)	19 (1%)
Vomiting	58 (3.5%)	10 (0.6%)
Constipation	33 (2%)	17 (1%)
Dyspepsia	30 (2%)	9 (0.5%)
Upper Abdominal Pain	29 (2%)	15 (1%)
<u>Musculoskeletal & Connective Tissue Disorders</u>		
Arthralgia	137 (8%)	98 (6%)
Back Pain	91 (5%)	58 (3%)
Myalgia	63 (4%)	17 (1%)
Bone Pain	49 (3%)	26 (2%)
Muscle Spasm	46 (3%)	3 (0.2%)
<u>Nervous System Disorders</u>		
Headache	162 (10%)	49 (3%)
Paraesthesia	29 (2%)	11 (0.6%)
<u>Skin & Subcutaneous Tissue Disorders</u>		
Rash	70 (4%)	10 (0.6%)
Nail Disorders	43 (2%)	0 (0%)
Pruritus	40 (2%)	10 (0.6%)
<u>General Disorders</u>		
Pyrexia	100 (6%)	6 (0.4%)
Edema Peripheral	79 (5%)	37 (2%)
Chills	85 (5%)	0 (0%)
Asthenia	75 (4.5%)	30 (2%)

Adverse Reaction	One year Trastuzumab (n = 1678)	Observation (n = 1708)
Influenza-like Illness	40 (2%)	3 (0.2%)
Sudden Death	1 (0.06%)	0 (0%)
<u>Infections</u>		
Nasopharyngitis	135 (8%)	43 (3%)
UTI	39 (3%)	13 (0.8%)
<u>Immune System Disorders</u>		
Hypersensitivity	10 (0.6%)	1 (0.06%)
Autoimmune Thyroiditis	4 (0.3%)	0 (0%)

^a Median follow-up duration of 12.6 months in the one-year trastuzumab treatment arm.

^b The incidence of Grade 3 or higher adverse reactions was <1% in both arms for each listed term.

^c Higher level grouping term.

In Study 3, a comparison of 3-weekly trastuzumab treatment for two years versus one year was also performed. The rate of asymptomatic cardiac dysfunction was increased in the 2-year trastuzumab treatment arm (8.1% versus 4.6% in the one-year trastuzumab treatment arm). More patients experienced at least one adverse reaction of Grade 3 or higher in the 2-year trastuzumab treatment arm (20.4%) compared with the one-year trastuzumab treatment arm (16.3%).

The safety data from Studies 1 and 2 were obtained from 3655 patients, of whom 2000 received trastuzumab; the median treatment duration was 51 weeks. The median age was 49 years (range: 24 to 80); 84% of patients were White, 7% Black, 4% Hispanic, and 3% Asian.

In Study 1, only Grade 3 to 5 adverse events, treatment-related Grade 2 events, and Grade 2-5 dyspnea were collected during and for up to 3 months following protocol-specified treatment. The following non-cardiac adverse reactions of Grade 2 to 5 occurred at an incidence of at least 2% greater among patients receiving trastuzumab plus chemotherapy as compared to chemotherapy alone: fatigue (29.5% vs. 22.4%), infection (24.0% vs. 12.8%), hot flashes (17.1% vs. 15.0%), anemia (12.3% vs. 6.7%), dyspnea (11.8% vs. 4.6%), rash/desquamation (10.9% vs. 7.6%), leukopenia (10.5% vs. 8.4%), neutropenia (6.4% vs. 4.3%), headache (6.2% vs. 3.8%), pain (5.5% vs. 3.0%), edema (4.7% vs. 2.7%), and insomnia (4.3% vs. 1.5%). The majority of these events were Grade 2 in severity.

In Study 2, data collection was limited to the following investigator-attributed treatment-related adverse reactions: NCI-CTC Grade 4 and 5 hematologic toxicities, Grade 3 to 5 non-hematologic toxicities, selected Grade 2 to 5 toxicities associated with taxanes (myalgia, arthralgias, nail changes, motor neuropathy, and sensory neuropathy) and Grade 1 to 5 cardiac toxicities occurring during chemotherapy and/or trastuzumab treatment. The following non-cardiac adverse reactions of Grade 2 to 5 occurred at an incidence of at least 2% greater among patients receiving trastuzumab plus chemotherapy as compared to chemotherapy alone: arthralgia (12.2% vs. 9.1%), nail changes (11.5% vs. 6.8%), dyspnea (2.4% vs. 0.2%), and diarrhea (2.2% vs. 0%). The majority of these events were Grade 2 in severity.

Safety data from Study 4 reflect exposure to trastuzumab as part of an adjuvant treatment regimen from 2124 patients receiving at least one dose of study treatment [AC-TH: n = 1068; TCH: n =

1056]. The overall median treatment duration was 54 weeks in both the AC-TH and TCH arms. The median number of infusions was 26 in the AC-TH arm and 30 in the TCH arm, including weekly infusions during the chemotherapy phase and every three week dosing in the monotherapy period. Among these patients, the median age was 49 years (range 22 to 74 years). In Study 4, the toxicity profile was similar to that reported in Studies 1, 2, and 3 with the exception of a low incidence of CHF in the TCH arm.

Metastatic Breast Cancer Studies

The data below reflect exposure to trastuzumab in one randomized, open-label study, Study 5, of chemotherapy with (n = 235) or without (n = 234) trastuzumab in patients with metastatic breast cancer, and one single-arm study (Study 6; n = 222) in patients with metastatic breast cancer. Data in Table 4 are based on Studies 5 and 6.

Among the 464 patients treated in Study 5, the median age was 52 years (range: 25 to 77 years). Eighty-nine percent were White, 5% Black, 1% Asian, and 5% other racial/ethnic groups. All patients received 4 mg/kg initial dose of trastuzumab followed by 2 mg/kg weekly. The percentages of patients who received trastuzumab treatment for ≥ 6 months and ≥ 12 months were 58% and 9%, respectively.

Among the 352 patients treated in single agent studies (213 patients from Study 6), the median age was 50 years (range 28 to 86 years), 86% were White, 3% were Black, 3% were Asian, and 8% in other racial/ethnic groups. Most of the patients received 4 mg/kg initial dose of trastuzumab followed by 2 mg/kg weekly. The percentages of patients who received trastuzumab treatment for ≥ 6 months and ≥ 12 months were 31% and 16%, respectively.

Table 4
Per-Patient Incidence of Adverse Reactions Occurring in $\geq 5\%$ of Patients in Uncontrolled Studies or at Increased Incidence in the Trastuzumab Arm (Studies 5 and 6)

	Single Agent ^a n = 352	Trastuzumab + Paclitaxel n = 91	Paclitaxel Alone n = 95	Trastuzumab + AC ^b n = 143	AC ^b Alone n = 135
<u>Body as a Whole</u>					
Pain	47%	61%	62%	57%	42%
Asthenia	42%	62%	57%	54%	55%
Fever	36%	49%	23%	56%	34%
Chills	32%	41%	4%	35%	11%
Headache	26%	36%	28%	44%	31%
Abdominal pain	22%	34%	22%	23%	18%
Back pain	22%	34%	30%	27%	15%
Infection	20%	47%	27%	47%	31%
Flu syndrome	10%	12%	5%	12%	6%
Accidental injury	6%	13%	3%	9%	4%
Allergic reaction	3%	8%	2%	4%	2%
<u>Cardiovascular</u>					
Tachycardia	5%	12%	4%	10%	5%
Congestive heart failure	7%	11%	1%	28%	7%

	Single Agent ^a n = 352	Trastuzumab + Paclitaxel n = 91	Paclitaxel Alone n = 95	Trastuzumab + AC ^b n = 143	AC ^b Alone n = 135
<u>Digestive</u>					
Nausea	33%	51%	9%	76%	77%
Diarrhea	25%	45%	29%	45%	26%
Vomiting	23%	37%	28%	53%	49%
Nausea and vomiting	8%	14%	11%	18%	9%
Anorexia	14%	24%	16%	31%	26%
<u>Heme & Lymphatic</u>					
Anemia	4%	14%	9%	36%	26%
Leukopenia	3%	24%	17%	52%	34%
<u>Metabolic</u>					
Peripheral edema	10%	22%	20%	20%	17%
Edema	8%	10%	8%	11%	5%
<u>Musculoskeletal</u>					
Bone pain	7%	24%	18%	7%	7%
Arthralgia	6%	37%	21%	8%	9%
<u>Nervous</u>					
Insomnia	14%	25%	13%	29%	15%
Dizziness	13%	22%	24%	24%	18%
Paresthesia	9%	48%	39%	17%	11%
Depression	6%	12%	13%	20%	12%
Peripheral neuritis	2%	23%	16%	2%	2%
Neuropathy	1%	13%	5%	4%	4%
<u>Respiratory</u>					
Cough increased	26%	41%	22%	43%	29%
Dyspnea	22%	27%	26%	42%	25%
Rhinitis	14%	22%	5%	22%	16%
Pharyngitis	12%	22%	14%	30%	18%
Sinusitis	9%	21%	7%	13%	6%
<u>Skin</u>					
Rash	18%	38%	18%	27%	17%
Herpes simplex	2%	12%	3%	7%	9%
Acne	2%	11%	3%	3%	< 1%
<u>Urogenital</u>					
Urinary tract infection	5%	18%	14%	13%	7%

^a Data for trastuzumab single agent were from 4 studies, including 213 patients from Study 6.

^b Anthracycline (doxorubicin or epirubicin) and cyclophosphamide.

Metastatic Gastric Cancer

The data below are based on the exposure of 294 patients to trastuzumab in combination with a fluoropyrimidine (capecitabine or 5-FU) and cisplatin (Study 7). In the trastuzumab plus chemotherapy arm, the initial dose of trastuzumab 8 mg/kg was administered on Day 1 (prior to chemotherapy) followed by 6 mg/kg every 21 days until disease progression. Cisplatin was administered at 80 mg/m² on Day 1 and the fluoropyrimidine was administered as either

capecitabine 1000 mg/m² orally twice a day on Days 1 to 14 or 5-fluorouracil 800 mg/m²/day as a continuous intravenous infusion Days 1 through 5. Chemotherapy was administered for six 21-day cycles. Median duration of trastuzumab treatment was 21 weeks; median number of trastuzumab infusions administered was eight.

Table 5
 Study 7: Per Patient Incidence of Adverse Reactions of All Grades
 (Incidence ≥ 5% between Arms) or Grade 3/4 (Incidence > 1% between Arms)
 and Higher Incidence in Trastuzumab Arm

Body System/Adverse Event	Trastuzumab + FC (N = 294) N (%)		FC (N = 290) N (%)	
	All Grades	Grades 3/4	All Grades	Grades 3/4
<u>Investigations</u>				
Neutropenia	230 (78)	101 (34)	212 (73)	83 (29)
Hypokalemia	83 (28)	28 (10)	69 (24)	16 (6)
Anemia	81 (28)	36 (12)	61 (21)	30 (10)
Thrombocytopenia	47 (16)	14 (5)	33 (11)	8 (3)
<u>Blood and Lymphatic System Disorders</u>				
Febrile Neutropenia	–	15 (5)	–	8 (3)
<u>Gastrointestinal Disorders</u>				
Diarrhea	109 (37)	27 (9)	80 (28)	11 (4)
Stomatitis	72 (24)	2 (1)	43 (15)	6 (2)
Dysphagia	19 (6)	7 (2)	10 (3)	1 (≤ 1)
<u>Body as a Whole</u>				
Fatigue	102 (35)	12 (4)	82 (28)	7 (2)
Fever	54 (18)	3 (1)	36 (12)	0 (0)
Mucosal Inflammation	37 (13)	6 (2)	18 (6)	2 (1)
Chills	23 (8)	1 (≤ 1)	0 (0)	0 (0)
<u>Metabolism and Nutrition Disorders</u>				
Weight Decrease	69 (23)	6 (2)	40 (14)	7 (2)
<u>Infections and Infestations</u>				
Upper Respiratory Tract Infections	56 (19)	0 (0)	29 (10)	0 (0)
Nasopharyngitis	37 (13)	0 (0)	17 (6)	0 (0)
<u>Renal and Urinary Disorders</u>				
Renal Failure and Impairment	53 (18)	8 (3)	42 (15)	5 (2)
<u>Nervous System Disorders</u>				
Dysgeusia	28 (10)	0 (0)	14 (5)	0 (0)

The following subsections provide additional detail regarding adverse reactions observed in clinical trials of adjuvant breast cancer, metastatic breast cancer, metastatic gastric cancer, or post-marketing experience.

Cardiomyopathy

Serial measurement of cardiac function (LVEF) was obtained in clinical trials in the adjuvant treatment of breast cancer. In Study 3, the median duration of follow-up was 12.6 months (12.4

months in the observation arm; 12.6 months in the 1-year trastuzumab arm); and in Studies 1 and 2, 7.9 years in the AC-T arm, 8.3 years in the AC-TH arm. In Studies 1 and 2, 6% of all randomized patients with post-AC LVEF evaluation were not permitted to initiate trastuzumab following completion of AC chemotherapy due to cardiac dysfunction (LVEF < LLN or ≥ 16 point decline in LVEF from baseline to end of AC). Following initiation of trastuzumab therapy, the incidence of new-onset dose-limiting myocardial dysfunction was higher among patients receiving trastuzumab and paclitaxel as compared to those receiving paclitaxel alone in Studies 1 and 2, and in patients receiving one-year trastuzumab monotherapy compared to observation in Study 3 (see Table 6, Figures 1 and 2). The per-patient incidence of new-onset cardiac dysfunction, as measured by LVEF, remained similar when compared to the analysis performed at a median follow-up of 2.0 years in the AC-TH arm. This analysis also showed evidence of reversibility of left ventricular dysfunction, with 64.5% of patients who experienced symptomatic CHF in the AC-TH group being asymptomatic at latest follow-up, and 90.3% having full or partial LVEF recovery.

Table 6^a
Per-patient Incidence of New Onset
Myocardial Dysfunction (by LVEF) Studies 1, 2, 3 and 4

	LVEF < 50% and Absolute Decrease from Baseline			Absolute LVEF Decrease	
	LVEF < 50%	$\geq 10\%$ decrease	$\geq 16\%$ decrease	< 20% and $\geq 10\%$	$\geq 20\%$
Studies 1 & 2^{b,c}					
AC \rightarrow TH (n = 1856)	23.1% (428)	18.5% (344)	11.2% (208)	37.9% (703)	8.9% (166)
AC \rightarrow T (n = 1170)	11.7% (137)	7.0% (82)	3.0% (35)	22.1% (259)	3.4% (40)
Study 3^d					
Trastuzumab (n = 1678)	8.6% (144)	7.0% (118)	3.8% (64)	22.4% (376)	3.5% (59)
Observation (n = 1708)	2.7% (46)	2.0% (35)	1.2% (20)	11.9% (204)	1.2% (21)
Study 4^e					
TCH (n = 1056)	8.5% (90)	5.9% (62)	3.3% (35)	34.5% (364)	6.3% (67)
AC \rightarrow TH (n = 1068)	17% (182)	13.3% (142)	9.8% (105)	44.3% (473)	13.2% (141)
AC \rightarrow T (n = 1050)	9.5% (100)	6.6% (69)	3.3% (35)	34% (357)	5.5% (58)

^a For Studies 1, 2 and 3, events are counted from the beginning of trastuzumab treatment. For Study 4, events are counted from the date of randomization.

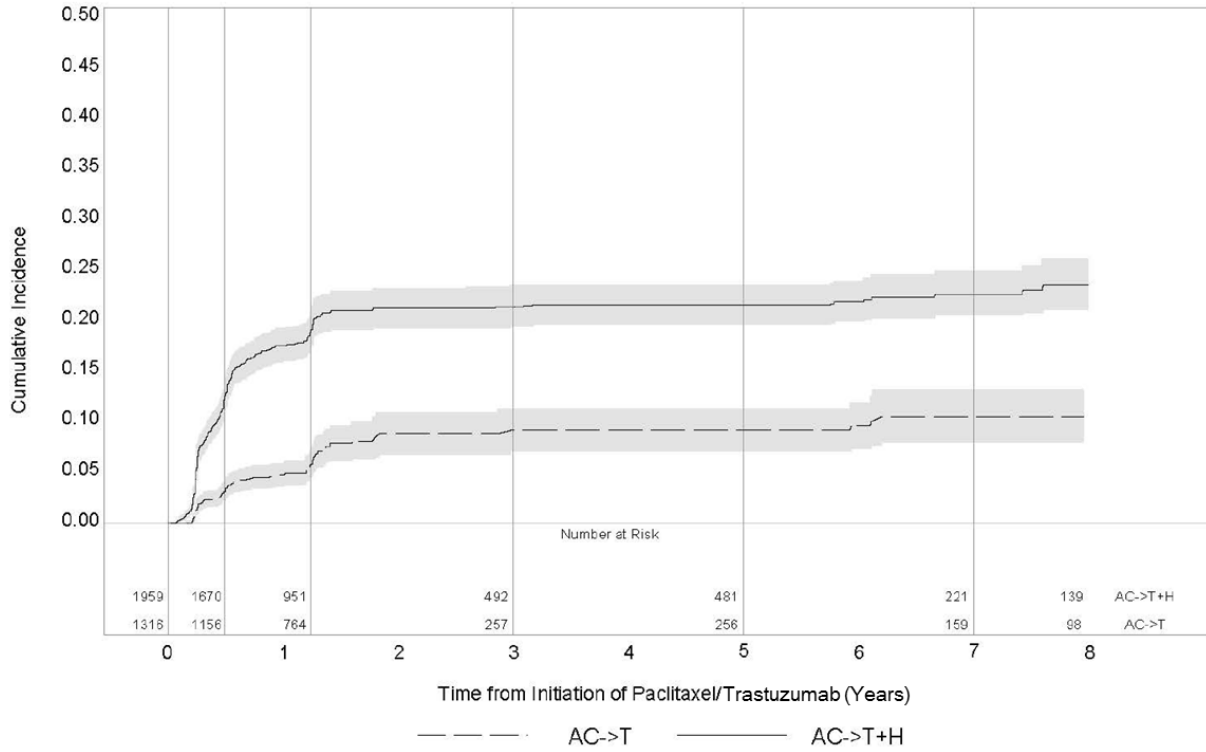
^b Studies 1 and 2 regimens: doxorubicin and cyclophosphamide followed by paclitaxel (AC \rightarrow T) or paclitaxel plus trastuzumab (AC \rightarrow TH).

^c Median duration of follow-up for Studies 1 and 2 combined was 8.3 years in the AC \rightarrow TH arm.

^d Median follow-up duration of 12.6 months in the one-year trastuzumab treatment arm.

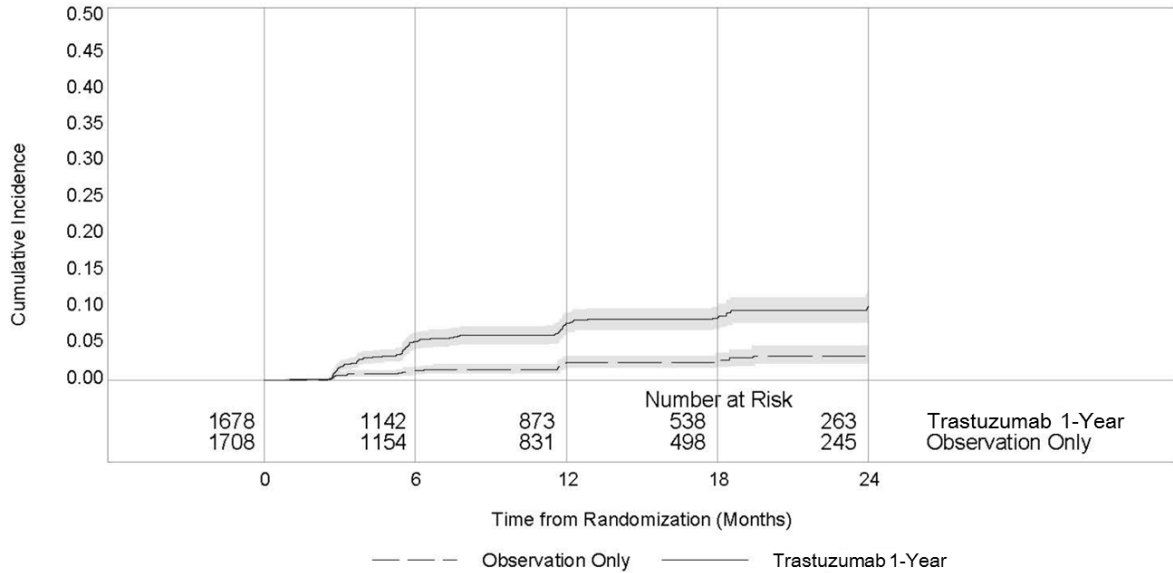
^e Study 4 regimens: doxorubicin and cyclophosphamide followed by docetaxel (AC \rightarrow T) or docetaxel plus trastuzumab (AC \rightarrow TH); docetaxel and carboplatin plus trastuzumab (TCH).

Figure 1
Studies 1 and 2: Cumulative Incidence of Time to First LVEF
Decline of ≥ 10 Percentage Points from Baseline and to
Below 50% with Death as a Competing Risk Event



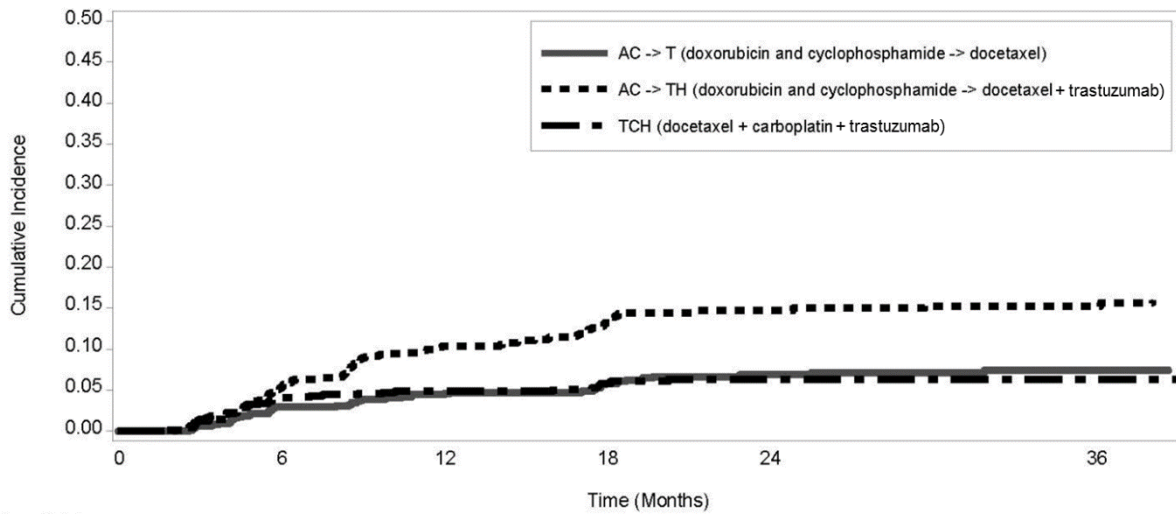
Time 0 is initiation of paclitaxel or trastuzumab + paclitaxel therapy.

Figure 2
Study 3: Cumulative Incidence of Time to First LVEF
Decline of ≥ 10 Percentage Points from Baseline and to
Below 50% with Death as a Competing Risk Event



Time 0 is the date of randomization.

Figure 3
Study 4: Cumulative Incidence of Time to First LVEF
Decline of ≥ 10 Percentage Points from Baseline and to
Below 50% with Death as a Competing Risk Event



Time 0 is the date of randomization.

The incidence of treatment emergent congestive heart failure among patients in the metastatic breast cancer trials was classified for severity using the New York Heart Association classification system (I-IV, where IV is the most severe level of cardiac failure) (see Table 2). In the metastatic

breast cancer trials, the probability of cardiac dysfunction was highest in patients who received trastuzumab concurrently with anthracyclines.

In Study 7, 5.0% of patients in the trastuzumab plus chemotherapy arm compared to 1.1% of patients in the chemotherapy alone arm had LVEF value below 50% with a $\geq 10\%$ absolute decrease in LVEF from pretreatment values.

Infusion Reactions

During the first infusion with trastuzumab, the symptoms most commonly reported were chills and fever, occurring in approximately 40% of patients in clinical trials. Symptoms were treated with acetaminophen, diphenhydramine, and meperidine (with or without reduction in the rate of trastuzumab infusion); permanent discontinuation of trastuzumab for infusion reactions was required in $< 1\%$ of patients. Other signs and/or symptoms may include nausea, vomiting, pain (in some cases at tumor sites), rigors, headache, dizziness, dyspnea, hypotension, elevated blood pressure, rash, and asthenia. Infusion reactions occurred in 21% and 35% of patients, and were severe in 1.4% and 9% of patients, on second or subsequent trastuzumab infusions administered as monotherapy or in combination with chemotherapy, respectively. In the post-marketing setting, severe infusion reactions, including hypersensitivity, anaphylaxis, and angioedema have been reported.

Anemia

In randomized controlled clinical trials, the overall incidence of anemia (30% vs. 21% [Study 5]), of selected NCI-CTC Grade 2 to 5 anemia (12.3% vs. 6.7% [Study 1]), and of anemia requiring transfusions (0.1% vs. 0 patients [Study 2]) were increased in patients receiving trastuzumab and chemotherapy compared with those receiving chemotherapy alone. Following the administration of trastuzumab as a single agent (Study 6), the incidence of NCI-CTC Grade 3 anemia was $< 1\%$. In Study 7 (metastatic gastric cancer), on the trastuzumab containing arm as compared to the chemotherapy alone arm, the overall incidence of anemia was 28% compared to 21% and of NCI-CTC Grade 3/4 anemia was 12.2% compared to 10.3%.

Neutropenia

In randomized controlled clinical trials in the adjuvant setting, the incidence of selected NCI-CTC Grade 4 to 5 neutropenia (1.7% vs. 0.8% [Study 2]) and of selected Grade 2 to 5 neutropenia (6.4% vs. 4.3% [Study 1]) were increased in patients receiving trastuzumab and chemotherapy compared with those receiving chemotherapy alone. In a randomized, controlled trial in patients with metastatic breast cancer, the incidences of NCI-CTC Grade 3/4 neutropenia (32% vs. 22%) and of febrile neutropenia (23% vs. 17%) were also increased in patients randomized to trastuzumab in combination with myelosuppressive chemotherapy as compared to chemotherapy alone. In Study 7 (metastatic gastric cancer) on the trastuzumab containing arm as compared to the chemotherapy alone arm, the incidence of NCI-CTC Grade 3/4 neutropenia was 36.8% compared to 28.9%; febrile neutropenia 5.1% compared to 2.8%.

Infection

The overall incidences of infection (46% vs. 30% [Study 5]), of selected NCI-CTC Grade 2 to 5 infection/febrile neutropenia (24.3% vs. 13.4% [Study 1]) and of selected Grade 3 to 5 infection/febrile neutropenia (2.9% vs. 1.4%) [Study 2]) were higher in patients receiving

trastuzumab and chemotherapy compared with those receiving chemotherapy alone. The most common site of infections in the adjuvant setting involved the upper respiratory tract, skin, and urinary tract.

In Study 4, the overall incidence of infection was higher with the addition of trastuzumab to AC-T but not to TCH [44% (AC-TH), 37% (TCH), 38% (AC-T)]. The incidences of NCI-CTC Grade 3 to 4 infection were similar [25% (AC-TH), 21% (TCH), 23% (AC-T)] across the three arms.

In a randomized, controlled trial in treatment of metastatic breast cancer, the reported incidence of febrile neutropenia was higher (23% vs. 17%) in patients receiving trastuzumab in combination with myelosuppressive chemotherapy as compared to chemotherapy alone.

Pulmonary Toxicity

Adjuvant Breast Cancer

Among women receiving adjuvant therapy for breast cancer, the incidence of selected NCI-CTC Grade 2 to 5 pulmonary toxicity (14.3% vs. 5.4% [Study 1]) and of selected NCI-CTC Grade 3 to 5 pulmonary toxicity and spontaneous reported Grade 2 dyspnea (3.4% vs. 0.9% [Study 2]) was higher in patients receiving trastuzumab and chemotherapy compared with chemotherapy alone. The most common pulmonary toxicity was dyspnea (NCI-CTC Grade 2 to 5: 11.8% vs. 4.6% [Study 1]; NCI-CTC Grade 2 to 5: 2.4% vs. 0.2% [Study 2]).

Pneumonitis/pulmonary infiltrates occurred in 0.7% of patients receiving trastuzumab compared with 0.3% of those receiving chemotherapy alone. Fatal respiratory failure occurred in 3 patients receiving trastuzumab, one as a component of multi-organ system failure, as compared to 1 patient receiving chemotherapy alone.

In Study 3, there were 4 cases of interstitial pneumonitis in the one-year trastuzumab treatment arm compared to none in the observation arm at a median follow-up duration of 12.6 months.

Metastatic Breast Cancer

Among women receiving trastuzumab for treatment of metastatic breast cancer, the incidence of pulmonary toxicity was also increased. Pulmonary adverse events have been reported in the post-marketing experience as part of the symptom complex of infusion reactions. Pulmonary events include bronchospasm, hypoxia, dyspnea, pulmonary infiltrates, pleural effusions, non-cardiogenic pulmonary edema, and acute respiratory distress syndrome. For a detailed description, see *Warnings and Precautions (5.4)*.

Thrombosis/Embolism

In 4 randomized, controlled clinical trials, the incidence of thrombotic adverse events was higher in patients receiving trastuzumab and chemotherapy compared to chemotherapy alone in three studies (2.6% vs. 1.5% [Study 1], 2.5% and 3.7% vs. 2.2% [Study 4] and 2.1% vs. 0% [Study 5]).

Diarrhea

Among women receiving adjuvant therapy for breast cancer, the incidence of NCI-CTC Grade 2 to 5 diarrhea (6.7% vs. 5.4% [Study 1]) and of NCI-CTC Grade 3 to 5 diarrhea (2.2% vs. 0% [Study 2]), and of Grade 1 to 4 diarrhea (7% vs. 1% [Study 3; one-year trastuzumab treatment at 12.6 months median duration of follow-up]) were higher in patients receiving trastuzumab as compared

to controls. In Study 4, the incidence of Grade 3 to 4 diarrhea was higher [5.7% AC-TH, 5.5% TCH vs. 3.0% AC-T] and of Grade 1 to 4 was higher [51% AC-TH, 63% TCH vs. 43% AC-T] among women receiving trastuzumab. Of patients receiving trastuzumab as a single agent for the treatment of metastatic breast cancer, 25% experienced diarrhea. An increased incidence of diarrhea was observed in patients receiving trastuzumab in combination with chemotherapy for treatment of metastatic breast cancer.

Renal Toxicity

In Study 7 (metastatic gastric cancer) on the trastuzumab-containing arm as compared to the chemotherapy alone arm the incidence of renal impairment was 18% compared to 14.5%. Severe (Grade 3/4) renal failure was 2.7% on the trastuzumab-containing arm compared to 1.7% on the chemotherapy only arm. Treatment discontinuation for renal insufficiency/failure was 2% on the trastuzumab-containing arm and 0.3% on the chemotherapy only arm.

In the post-marketing setting, rare cases of nephrotic syndrome with pathologic evidence of glomerulopathy have been reported. The time to onset ranged from 4 months to approximately 18 months from initiation of trastuzumab therapy. Pathologic findings included membranous glomerulonephritis, focal glomerulosclerosis, and fibrillary glomerulonephritis. Complications included volume overload and congestive heart failure.

6.2 Immunogenicity

As with all therapeutic proteins, there is a potential for immunogenicity. The detection of antibody formation is highly dependent on the sensitivity and the specificity of the assay. Additionally, the observed incidence of antibody (including neutralizing antibody) positivity in an assay may be influenced by several factors including assay methodology, sample handling, timing of sample collection, concomitant medications, and underlying disease. For these reasons, comparison of the incidence of antibodies in the studies described below with the incidence of antibodies in other studies or to other trastuzumab products may be misleading.

Among 903 women with metastatic breast cancer, human anti-human antibody (HAHA) to trastuzumab was detected in one patient using an enzyme-linked immunosorbent assay (ELISA). This patient did not experience an allergic reaction. Samples for assessment of HAHA were not collected in studies of adjuvant breast cancer.

6.3 Post-Marketing Experience

The following adverse reactions have been identified during post-approval use of trastuzumab. Because these reactions are reported voluntarily from a population of uncertain size, it is not always possible to reliably estimate their frequency or establish a causal relationship to drug exposure.

- Infusion reaction [*see Warnings and Precautions (5.2)*]
- Oligohydramnios or oligohydramnios sequence, including pulmonary hypoplasia, skeletal abnormalities, and neonatal death [*see Warnings and Precautions (5.3)*]
- Glomerulopathy [*see Adverse Reactions (6.1)*]
- Immune thrombocytopenia
- Tumor lysis syndrome (TLS): Cases of possible TLS have been reported in patients treated with trastuzumab. Patients with significant tumor burden (e.g. bulky metastases)

may be at a higher risk. Patients could present with hyperuricemia, hyperphosphatemia, and acute renal failure which may represent possible TLS. Providers should consider additional monitoring and/or treatment as clinically indicated.

7 DRUG INTERACTIONS

Patients who receive anthracycline after stopping trastuzumab products may be at increased risk of cardiac dysfunction because of trastuzumab's long washout period based on population PK analysis [see *Clinical Pharmacology (12.3)*]. If possible, physicians should avoid anthracycline-based therapy for up to 7 months after stopping trastuzumab products. If anthracyclines are used, the patient's cardiac function should be monitored carefully.

8 USE IN SPECIFIC POPULATIONS

8.1 Pregnancy

Risk Summary

Trastuzumab products can cause fetal harm when administered to a pregnant woman. In post-marketing reports, use of trastuzumab during pregnancy resulted in cases of oligohydramnios and of oligohydramnios sequence, manifesting as pulmonary hypoplasia, skeletal abnormalities, and neonatal death (*see Data*). Apprise the patient of the potential risks to a fetus. There are clinical considerations if a trastuzumab product is used in a pregnant woman or if a patient becomes pregnant within 7 months following the last dose of a trastuzumab product (*see Clinical Considerations*).

The estimated background risk of major birth defects and miscarriage for the indicated population is unknown. In the U.S. general population, the estimated background risk of major birth defects and miscarriage in clinically recognized pregnancies is 2% to 4% and 15% to 20%, respectively.

Clinical Considerations

Fetal/Neonatal Adverse Reactions

Monitor women who received Ontruzant during pregnancy or within 7 months prior to conception for oligohydramnios. If oligohydramnios occurs, perform fetal testing that is appropriate for gestational age and consistent with community standards of care.

Data

Human Data

In post-marketing reports, use of trastuzumab during pregnancy resulted in cases of oligohydramnios and of oligohydramnios sequence, manifesting in the fetus as pulmonary hypoplasia, skeletal abnormalities, and neonatal death. These case reports described oligohydramnios in pregnant women who received trastuzumab either alone or in combination with chemotherapy. In some case reports, amniotic fluid index increased after trastuzumab was stopped. In one case, trastuzumab therapy resumed after amniotic index improved, and oligohydramnios recurred.

Animal Data

In studies where trastuzumab was administered to pregnant cynomolgus monkeys during the period of organogenesis at doses up to 25 mg/kg given twice weekly (up to 25 times the recommended weekly human dose of 2 mg/kg), trastuzumab crossed the placental barrier during

the early (Gestation Days 20 to 50) and late (Gestation Days 120 to 150) phases of gestation. The resulting concentrations of trastuzumab in fetal serum and amniotic fluid were approximately 33% and 25%, respectively, of those present in the maternal serum but were not associated with adverse developmental effects.

8.2 Lactation

Risk Summary

There is no information regarding the presence of trastuzumab products in human milk, the effects on the breastfed infant, or the effects on milk production. Published data suggest human IgG is present in human milk but does not enter the neonatal and infant circulation in substantial amounts. Trastuzumab was present in the milk of lactating cynomolgus monkeys but not associated with neonatal toxicity (*see Data*). Consider the developmental and health benefits of breastfeeding along with the mother's clinical need for Ontruzant treatment and any potential adverse effects on the breastfed child from Ontruzant or from the underlying maternal condition. This consideration should also take into account the trastuzumab product wash out period of 7 months [*see Clinical Pharmacology (12.3)*].

Data

In lactating cynomolgus monkeys, trastuzumab was present in breast milk at about 0.3% of maternal serum concentrations after pre-(beginning Gestation Day 120) and post-partum (through Post-partum Day 28) doses of 25 mg/kg administered twice weekly (25 times the recommended weekly human dose of 2 mg/kg of trastuzumab products). Infant monkeys with detectable serum levels of trastuzumab did not exhibit any adverse effects on growth or development from birth to 1 month of age.

8.3 Females and Males of Reproductive Potential

Pregnancy Testing

Verify the pregnancy status of females of reproductive potential prior to the initiation of Ontruzant.

Contraception

Females

Trastuzumab products can cause embryo-fetal harm when administered during pregnancy. Advise females of reproductive potential to use effective contraception during treatment with Ontruzant and for 7 months following the last dose of Ontruzant [*see Use in Specific Populations (8.1) and Clinical Pharmacology (12.3)*].

8.4 Pediatric Use

The safety and effectiveness of trastuzumab products in pediatric patients have not been established.

8.5 Geriatric Use

Trastuzumab has been administered to 386 patients who were 65 years of age or over (253 in the adjuvant treatment and 133 in metastatic breast cancer treatment settings). The risk of cardiac

dysfunction was increased in geriatric patients as compared to younger patients in both those receiving treatment for metastatic disease in Studies 5 and 6, or adjuvant therapy in Studies 1 and 2. Limitations in data collection and differences in study design of the 4 studies of trastuzumab in adjuvant treatment of breast cancer preclude a determination of whether the toxicity profile of trastuzumab in older patients is different from younger patients. The reported clinical experience is not adequate to determine whether the efficacy improvements (ORR, TTP, OS, DFS) of trastuzumab treatment in older patients is different from that observed in patients < 65 years of age for metastatic disease and adjuvant treatment.

In Study 7 (metastatic gastric cancer), of the 294 patients treated with trastuzumab, 108 (37%) were 65 years of age or older, while 13 (4.4%) were 75 and over. No overall differences in safety or effectiveness were observed.

10 OVERDOSAGE

There is no experience with overdosage in human clinical trials. Single doses higher than 8 mg/kg have not been tested.

11 DESCRIPTION

Trastuzumab-dttb is a humanized IgG1 kappa monoclonal antibody that selectively binds with high affinity to the extracellular domain of the human epidermal growth factor receptor 2 protein, HER2. Trastuzumab-dttb is produced by recombinant DNA technology in a mammalian cell (Chinese Hamster Ovary) culture.

Ontruzant (trastuzumab-dttb) for injection is a sterile, white to pale yellow, preservative-free lyophilized powder with a cake-like appearance, for intravenous administration.

Each multiple-dose vial of Ontruzant delivers 420 mg trastuzumab-dttb, 381.4 mg α,α -trehalose dihydrate, 9.4 mg L-histidine HCl monohydrate, 6.1 mg L-histidine, and 1.7 mg polysorbate 20. Reconstitution with 20 mL of the appropriate diluent (BWFI or SWFI) yields a solution containing 21 mg/mL trastuzumab-dttb at a pH of approximately 6. If Ontruzant is reconstituted with SWFI without preservative, the reconstituted solution is considered single-dose.

Each single-dose vial of Ontruzant delivers 150 mg trastuzumab-dttb, 136.2 mg α,α -trehalose dihydrate, 3.4 mg L-histidine HCl monohydrate, 2.2 mg L-histidine, and 0.6 mg polysorbate 20. Reconstitution with 7.4 mL of sterile water for injection (SWFI) yields a solution containing 21 mg/mL trastuzumab-dttb that delivers 7.15 mL (150 mg trastuzumab-dttb), at a pH of approximately 6.

12 CLINICAL PHARMACOLOGY

12.1 Mechanism of Action

The HER2 (or c-erbB2) proto-oncogene encodes a transmembrane receptor protein of 185 kDa, which is structurally related to the epidermal growth factor receptor. Trastuzumab products have been shown, in both *in vitro* assays and in animals, to inhibit the proliferation of human tumor cells that overexpress HER2.

Trastuzumab products are mediators of antibody-dependent cellular cytotoxicity (ADCC). *In vitro*, trastuzumab product-mediated ADCC has been shown to be preferentially exerted on HER2 overexpressing cancer cells compared with cancer cells that do not overexpress HER2.

12.2 Pharmacodynamics

Cardiac Electrophysiology

The effects of trastuzumab on electrocardiographic (ECG) endpoints, including QTc interval duration, were evaluated in patients with HER2 positive solid tumors. Trastuzumab had no clinically relevant effect on the QTc interval duration and there was no apparent relationship between serum trastuzumab concentrations and change in QTcF interval duration in patients with HER2 positive solid tumors.

12.3 Pharmacokinetics

The pharmacokinetics of trastuzumab were evaluated in a pooled population pharmacokinetic (PK) model analysis of 1,582 subjects with primarily breast cancer and metastatic gastric cancer (MGC) receiving intravenous trastuzumab. Total trastuzumab clearance increases with decreasing concentrations due to parallel linear and non-linear elimination pathways.

Although the average trastuzumab exposure was higher following the first cycle in breast cancer patients receiving the three-weekly schedule compared to the weekly schedule of trastuzumab, the average steady-state exposure was essentially the same at both dosages. The average trastuzumab exposure following the first cycle and at steady state as well as the time to steady state was higher in breast cancer patients compared to MGC patients at the same dosage; however, the reason for this exposure difference is unknown. Additional predicted trastuzumab exposure and PK parameters following the first trastuzumab cycle and at steady state exposure are described in Tables 7 and 8, respectively.

Population PK based simulations indicate that following discontinuation of trastuzumab, concentrations in at least 95% of breast cancer and MGC patients will decrease to approximately 3% of the population predicted steady-state trough serum concentration (approximately 97% washout) by 7 months [*see Warnings and Precautions (5.1) and Use in Specific Populations (8.1, 8.3)*].

Table 7

Population Predicted Cycle 1 PK Exposures (Median with 5th to 95th Percentiles) in Breast Cancer and MGC Patients

Schedule	Primary tumor type	N	C _{min} (µg/mL)	C _{max} (µg/mL)	AUC _{0-21 days} (µg.day/mL)
8 mg/kg + 6 mg/kg q3w	Breast cancer	1195	29.4 (5.8 to 59.5)	178 (117 to 291)	1373 (736 to 2245)
	MGC	274	23.1 (6.1 to 50.3)	132 (84.2 to 225)	1109 (588 to 1938)
4 mg/kg + 2 mg/kg qw	Breast cancer	1195	37.7 (12.3 to 70.9)	88.3 (58 to 144)	1066 (586 to 1754)

Table 8

Population Predicted Steady State PK Exposures (Median with 5th to 95th Percentiles) in Breast Cancer and MGC Patients

Schedule	Primary tumor type	N	C _{min.ss} ^a (µg/mL)	C _{max.ss} ^b (µg/mL)	AUC _{ss, 0-21 days} (µg.day/mL)	Time to steady-state (week)	Total CL range at steady-state (L/day)
8 mg/kg + 6 mg/kg q3w	Breast cancer	1195	47.4 (5 to 115)	179 (107 to 309)	1794 (673 to 3618)	12	0.173 to 0.283
	MGC	274	32.9 (6.1 to 88.9)	131 (72.5 to 251)	1338 (557 to 2875)	9	0.189 to 0.337
4 mg/kg + 2 mg/kg qw	Breast cancer	1195	66.1 (14.9 to 142)	109 (51.0 to 209)	1765 (647 to 3578)	12	0.201 to 0.244

^a Steady-state trough serum concentration of trastuzumab

^b Maximum steady-state serum concentration of trastuzumab

Specific Populations:

Based on a population pharmacokinetic analysis, no clinically significant differences were observed in the pharmacokinetics of trastuzumab based on age (< 65 (n = 1294); ≥ 65 (n = 288)), race (Asian (n = 264); non-Asian (n = 1324)) and renal impairment (mild (creatinine clearance [CLCr] 60 to 90 mL/min) (n = 636) or moderate (CLCr 30 to 60 mL/min) (n = 133)). The pharmacokinetics of trastuzumab products in patients with severe renal impairment, end-stage renal disease with or without hemodialysis, or hepatic impairment is unknown.

Drug Interaction Studies:

There have been no formal drug interaction studies performed with trastuzumab products in humans. Clinically significant interactions between trastuzumab and concomitant medications used in clinical trials have not been observed.

Paclitaxel and doxorubicin: Concentrations of paclitaxel and doxorubicin and their major metabolites (i.e., 6- α hydroxyl-paclitaxel [POH], and doxorubicinol [DOL], respectively) were not altered in the presence of trastuzumab when used as combination therapy in clinical trials. Trastuzumab concentrations were not altered as part of this combination therapy.

Docetaxel and carboplatin: When trastuzumab was administered in combination with docetaxel or carboplatin, neither the plasma concentrations of docetaxel or carboplatin nor the plasma concentrations of trastuzumab were altered.

Cisplatin and capecitabine: In a drug interaction substudy conducted in patients in Study 7, the pharmacokinetics of cisplatin, capecitabine and their metabolites were not altered when administered in combination with trastuzumab.

13 NONCLINICAL TOXICOLOGY

13.1 Carcinogenesis, Mutagenesis, Impairment of Fertility

Trastuzumab products have not been tested for carcinogenic potential.

No evidence of mutagenic activity was observed when trastuzumab was tested in the standard

Ames bacterial and human peripheral blood lymphocyte mutagenicity assays at concentrations of up to 5000 mcg/mL. In an *in vivo* micronucleus assay, no evidence of chromosomal damage to mouse bone marrow cells was observed following bolus intravenous doses of up to 118 mg/kg of trastuzumab.

A fertility study was conducted in female cynomolgus monkeys at doses up to 25 times the weekly recommended human dose of 2 mg/kg of trastuzumab and has revealed no evidence of impaired fertility, as measured by menstrual cycle duration and female sex hormone levels.

14 CLINICAL STUDIES

14.1 Adjuvant Breast Cancer

The safety and efficacy of trastuzumab in women receiving adjuvant chemotherapy for HER2 overexpressing breast cancer were evaluated in an integrated analysis of two randomized, open-label, clinical trials (Studies 1 and 2) with a total of 4063 women at the protocol-specified final overall survival analysis, a third randomized, open-label, clinical trial (Study 3) with a total of 3386 women at definitive Disease-Free Survival analysis for one-year trastuzumab treatment versus observation, and a fourth randomized, open-label clinical trial with a total of 3222 patients (Study 4).

Studies 1 and 2:

In Studies 1 and 2, breast tumor specimens were required to show HER2 overexpression (3+ by IHC) or gene amplification (by FISH). HER2 testing was verified by a central laboratory prior to randomization (Study 2) or was required to be performed at a reference laboratory (Study 1).

Patients with a history of active cardiac disease based on symptoms, abnormal electrocardiographic, radiologic, or left ventricular ejection fraction findings or uncontrolled hypertension (diastolic > 100 mm Hg or systolic > 200 mm Hg) were not eligible.

Patients were randomized (1:1) to receive doxorubicin and cyclophosphamide followed by paclitaxel (AC → paclitaxel) alone or paclitaxel plus trastuzumab (AC → paclitaxel + trastuzumab). In both trials, patients received four 21-day cycles of doxorubicin 60 mg/m² and cyclophosphamide 600 mg/m². Paclitaxel was administered either weekly (80 mg/m²) or every 3 weeks (175 mg/m²) for a total of 12 weeks in Study 1; paclitaxel was administered only by the weekly schedule in Study 2. Trastuzumab was administered at 4 mg/kg on the day of initiation of paclitaxel and then at a dose of 2 mg/kg weekly for a total of 52 weeks. Trastuzumab treatment was permanently discontinued in patients who developed congestive heart failure, or persistent/recurrent LVEF decline [*see Dosage and Administration (2.3)*]. Radiation therapy, if administered, was initiated after the completion of chemotherapy. Patients with ER+ and/or PR+ tumors received hormonal therapy. The primary endpoint of the combined efficacy analysis was Disease-Free Survival (DFS), defined as the time from randomization to recurrence, occurrence of contralateral breast cancer, other second primary cancer, or death. The secondary endpoint was overall survival (OS).

A total of 3752 patients were included in the joint efficacy analysis of the primary endpoint of DFS following a median follow-up of 2.0 years in the AC → paclitaxel + trastuzumab arm. The pre-planned final OS analysis from the joint analysis included 4063 patients and was performed when 707 deaths had occurred after a median follow-up of 8.3 years in the AC → paclitaxel +

trastuzumab arm. The data from both arms in Study 1 and two of the three study arms in Study 2 were pooled for efficacy analyses. The patients included in the primary DFS analysis had a median age of 49 years (range, 22 to 80 years; 6% > 65 years), 84% were white, 7% black, 4% Hispanic, and 4% Asian/Pacific Islander. Disease characteristics included 90% infiltrating ductal histology, 38% T1, 91% nodal involvement, 27% intermediate and 66% high grade pathology, and 53% ER+ and/or PR+ tumors. Similar demographic and baseline characteristics were reported for the efficacy evaluable population, after 8.3 years of median follow-up in the AC → paclitaxel + trastuzumab arm.

Study 3:

In Study 3, breast tumor specimens were required to show HER2 overexpression (3+ by IHC) or gene amplification (by FISH) as determined at a central laboratory. Patients with node-negative disease were required to have \geq T1c primary tumor. Patients with a history of congestive heart failure or LVEF < 55%, uncontrolled arrhythmias, angina requiring medication, clinically significant valvular heart disease, evidence of transmural infarction on ECG, poorly controlled hypertension (systolic > 180 mm Hg or diastolic > 100 mm Hg) were not eligible.

Study 3 was designed to compare one and two years of three-weekly trastuzumab treatment versus observation in patients with HER2 positive EBC following surgery, established chemotherapy and radiotherapy (if applicable). Patients were randomized (1:1:1) upon completion of definitive surgery, and at least four cycles of chemotherapy to receive no additional treatment, or one year of trastuzumab treatment or two years of trastuzumab treatment. Patients undergoing a lumpectomy had also completed standard radiotherapy. Patients with ER+ and/or PgR+ disease received systemic adjuvant hormonal therapy at investigator discretion. Trastuzumab was administered with an initial dose of 8 mg/kg followed by subsequent doses of 6 mg/kg once every three weeks. The main outcome measure was Disease-Free Survival (DFS), defined as in Studies 1 and 2.

A protocol specified interim efficacy analysis comparing one-year trastuzumab treatment to observation was performed at a median follow-up duration of 12.6 months in the trastuzumab arm and formed the basis for the definitive DFS results from this study. Among the 3386 patients randomized to the observation (n = 1693) and trastuzumab one-year (n = 1693) treatment arms, the median age was 49 years (range 21 to 80), 83% were Caucasian, and 13% were Asian. Disease characteristics: 94% infiltrating ductal carcinoma, 50% ER+ and/or PgR+, 57% node positive, 32% node negative, and in 11% of patients, nodal status was not assessable due to prior neo-adjuvant chemotherapy. Ninety-six percent (1055/1098) of patients with node-negative disease had high-risk features: among the 1098 patients with node-negative disease, 49% (543) were ER- and PgR-, and 47% (512) were ER and/or PgR+ and had at least one of the following high-risk features: pathological tumor size greater than 2 cm, Grade 2 to 3, or age < 35 years. Prior to randomization, 94% of patients had received anthracycline-based chemotherapy regimens.

After the definitive DFS results comparing observation to one-year trastuzumab treatment were disclosed, a prospectively planned analysis that included comparison of one year versus two years of trastuzumab treatment at a median follow-up duration of 8 years was performed. Based on this analysis, extending trastuzumab treatment for a duration of two years did not show additional benefit over treatment for one year [Hazard Ratios of two-years trastuzumab versus one-year trastuzumab treatment in the intent to treat (ITT) population for Disease-Free Survival (DFS) =

0.99 (95% CI: 0.87, 1.13), p-value = 0.90 and Overall Survival (OS) = 0.98 (0.83, 1.15); p-value = 0.78].

Study 4:

In Study 4, breast tumor specimens were required to show HER2 gene amplification (FISH+ only) as determined at a central laboratory. Patients were required to have either node-positive disease, or node-negative disease with at least one of the following high-risk features: ER/PR-negative, tumor size > 2 cm, age < 35 years, or histologic and/or nuclear Grade 2 or 3. Patients with a history of CHF, myocardial infarction, Grade 3 or 4 cardiac arrhythmia, angina requiring medication, clinically significant valvular heart disease, poorly controlled hypertension (diastolic > 100 mm Hg), any T4 or N2, or known N3 or M1 breast cancer were not eligible.

Patients were randomized (1:1:1) to receive doxorubicin and cyclophosphamide followed by docetaxel (AC-T), doxorubicin and cyclophosphamide followed by docetaxel plus trastuzumab (AC-TH), or docetaxel and carboplatin plus trastuzumab (TCH). In both the AC-T and AC-TH arms, doxorubicin 60 mg/m² and cyclophosphamide 600 mg/m² were administered every 3 weeks for four cycles; docetaxel 100 mg/m² was administered every 3 weeks for four cycles. In the TCH arm, docetaxel 75 mg/m² and carboplatin (at a target AUC of 6 mg/mL/min as a 30-to 60-minute infusion) were administered every 3 weeks for six cycles. Trastuzumab was administered weekly (initial dose of 4 mg/kg followed by weekly dose of 2 mg/kg) concurrently with either T or TC, and then every 3 weeks (6 mg/kg) as monotherapy for a total of 52 weeks. Radiation therapy, if administered, was initiated after completion of chemotherapy. Patients with ER+ and/or PR+ tumors received hormonal therapy. Disease-Free Survival (DFS) was the main outcome measure. Among the 3222 patients randomized, the median age was 49 (range 22 to 74 years; 6% ≥ 65 years). Disease characteristics included 54% ER+ and/or PR+ and 71% node positive. Prior to randomization, all patients underwent primary surgery for breast cancer.

The results for DFS for the integrated analysis of Studies 1 and 2, Study 3, and Study 4 and OS results for the integrated analysis of Studies 1 and 2, and Study 3 are presented in Table 9. For Studies 1 and 2, the duration of DFS following a median follow-up of 2.0 years in the AC → TH arm is presented in Figure 4, and the duration of OS after a median follow-up of 8.3 years in the AC → TH arm is presented in Figure 5. The duration of DFS for Study 4 is presented in Figure 6. Across all four studies, at the time of definitive DFS analysis, there were insufficient numbers of patients within each of the following subgroups to determine if the treatment effect was different from that of the overall patient population: patients with low tumor grade, patients within specific ethnic/racial subgroups (Black, Hispanic, Asian/Pacific Islander patients), and patients > 65 years of age. For Studies 1 and 2, the OS hazard ratio was 0.64 (95% CI: 0.55, 0.74). At 8.3 years of median follow-up [AC → TH], the survival rate was estimated to be 86.9% in the AC → TH arm and 79.4% in the AC → T arm. The final OS analysis results from Studies 1 and 2 indicate that OS benefit by age, hormone receptor status, number of positive lymph nodes, tumor size and grade, and surgery/radiation therapy was consistent with the treatment effect in the overall population. In patients ≤ 50 years of age (n = 2197), the OS hazard ratio was 0.65 (95% CI: 0.52, 0.81) and in patients > 50 years of age (n = 1866), the OS hazard ratio was 0.63 (95% CI: 0.51, 0.78). In the subgroup of patients with hormone receptor-positive disease (ER-positive and/or PR-positive) (n = 2223), the hazard ratio for OS was 0.63 (95% CI: 0.51, 0.78). In the subgroup of patients with hormone receptor-negative disease (ER-negative and PR-negative) (n = 1830), the hazard ratio for

OS was 0.64 (95% CI: 0.52, 0.80). In the subgroup of patients with tumor size ≤ 2 cm (n = 1604), the hazard ratio for OS was 0.52 (95% CI: 0.39, 0.71). In the subgroup of patients with tumor size > 2 cm (n = 2448), the hazard ratio for OS was 0.67 (95% CI: 0.56, 0.80).

Table 9
Efficacy Results from Adjuvant Treatment of
Breast Cancer (Studies 1 + 2, Study 3, and Study 4)

	DFS events	DFS Hazard ratio (95% CI) p-value	Deaths (OS events)	OS Hazard ratio p-value
Studies 1 + 2^a				
AC → TH (n = 1872) ^b (n = 2031) ^c	133 ^b	0.48 ^{b,d} (0.39, 0.59) p < 0.0001 ^e	289 ^c	0.64 ^{c,d} (0.55, 0.74) p < 0.0001 ^e
AC → T (n = 1880) ^b (n = 2032) ^c	261 ^b		418 ^c	
Study 3^f				
Chemo → Trastuzumab (n = 1693)	127	0.54 (0.44, 0.67) p < 0.0001 ^g	31	0.75 p = NS ^h
Chemo → Observation (n = 1693)	219		40	
Study 4ⁱ				
TCH (n = 1075)	134	0.67 (0.54 to 0.84) p = 0.0006 ^{e,j}	56	
AC → TH (n = 1074)	121	0.60 (0.48 to 0.76) p < 0.0001 ^{e,i}	49	
AC → T (n = 1073)	180		80	

CI = confidence interval.

^a Studies 1 and 2 regimens: doxorubicin and cyclophosphamide followed by paclitaxel (AC → T) or paclitaxel plus trastuzumab (AC → TH).

^b Efficacy evaluable population, for the primary DFS analysis, following a median follow-up of 2.0 years in the AC → TH arm.

^c Efficacy evaluable population, for the final OS analysis, following 707 deaths (8.3 years of median follow-up in the AC → TH arm).

^d Hazard ratio estimated by Cox regression stratified by clinical trial, intended paclitaxel schedule, number of positive nodes, and hormone receptor status.

^e stratified log-rank test.

^f At definitive DFS analysis with median duration of follow-up of 12.6 months in the one-year trastuzumab treatment arm.

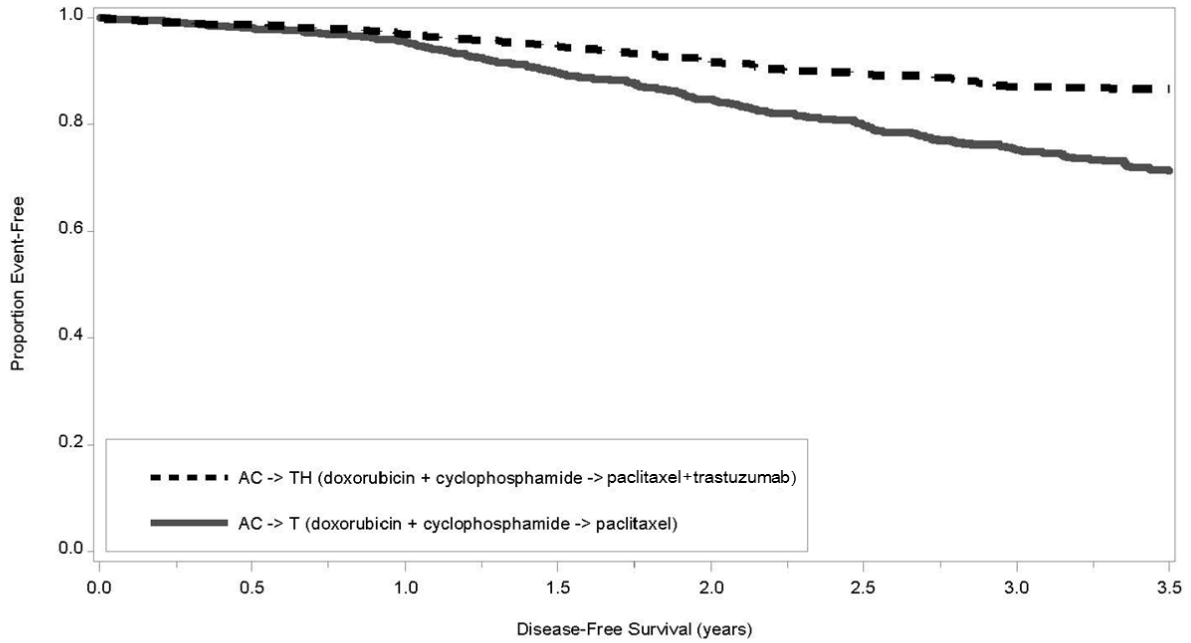
^g log-rank test.

^h NS = non-significant.

ⁱ Study 4 regimens: doxorubicin and cyclophosphamide followed by docetaxel (AC → T) or docetaxel plus trastuzumab (AC → TH); docetaxel and carboplatin plus trastuzumab (TCH).

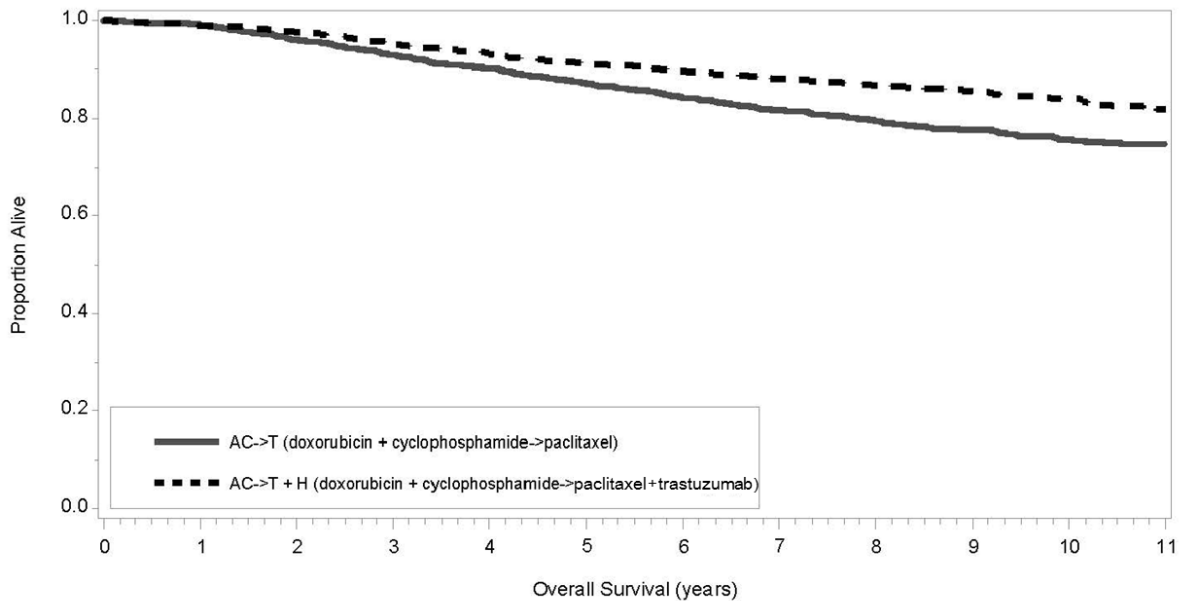
^j A two-sided alpha level of 0.025 for each comparison.

Figure 4
Duration of Disease-Free Survival in Patients with
Adjuvant Treatment of Breast Cancer (Studies 1 and 2)



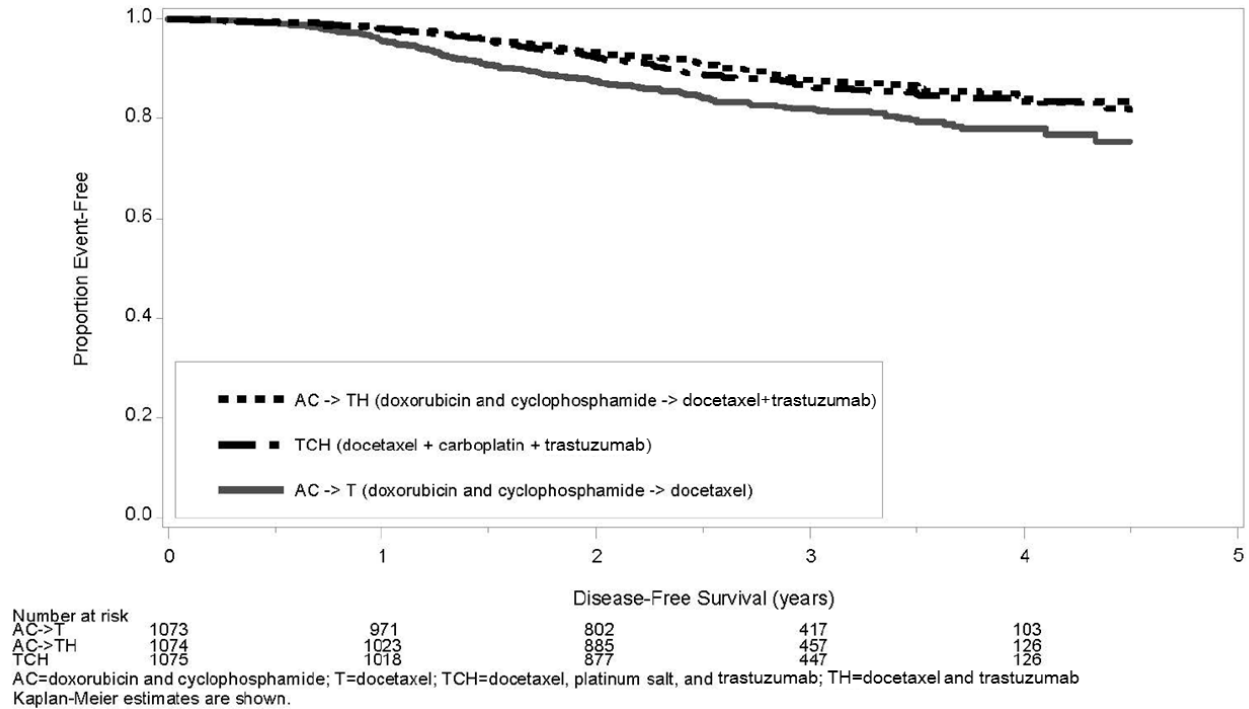
Number at risk	0.0	0.5	1.0	1.5	2.0	2.5	3.0	3.5
AC->T	1880	1490	1159	926	689	534	375	195
AC->T + H	1872	1529	1240	997	764	575	426	239

Figure 5
Duration of Overall Survival in Patients with
Adjuvant Treatment of Breast Cancer (Studies 1 and 2)



Number at risk	0	1	2	3	4	5	6	7	8	9	10	11
AC->T	2032	1961	1883	1806	1732	1643	1538	1377	979	630	399	151
AC->T + H	2031	1992	1957	1897	1843	1787	1714	1533	1127	787	485	159

Figure 6
Duration of Disease-Free Survival in Patients with
Adjuvant Treatment of Breast Cancer (Study 4)



Exploratory analyses of DFS as a function of HER2 overexpression or gene amplification were conducted for patients in Studies 2 and 3, where central laboratory testing data were available. The results are shown in Table 10. The number of events in Study 2 was small with the exception of the IHC 3+/FISH+ subgroup, which constituted 81% of those with data. Definitive conclusions cannot be drawn regarding efficacy within other subgroups due to the small number of events. The number of events in Study 3 was adequate to demonstrate significant effects on DFS in the IHC 3+/FISH unknown and the FISH +/IHC unknown subgroups.

Table 10
Treatment Outcomes in Studies 2 and 3 as a Function of
HER2 Overexpression or Amplification

HER2 Assay Result ^a	Study 2		Study 3 ^c	
	Number of Patients	Hazard Ratio DFS (95% CI)	Number of Patients	Hazard Ratio DFS (95% CI)
IHC 3+				
FISH (+)	1170	0.42 (0.27, 0.64)	91	0.56 (0.13, 2.50)
FISH (-)	51	0.71 (0.04, 11.79)	8	—
FISH Unknown	51	0.69 (0.09, 5.14)	2258	0.53 (0.41, 0.69)
IHC < 3+ / FISH (+)	174	1.01 (0.18, 5.65)	299 ^b	0.53 (0.20, 1.42)

	Study 2		Study 3 ^c	
HER2 Assay Result ^a	Number of Patients	Hazard Ratio DFS (95% CI)	Number of Patients	Hazard Ratio DFS (95% CI)
IHC unknown / FISH (+)	—	—	724	0.59 (0.38, 0.93)

^a IHC by HercepTest, FISH by PathVysion (HER2/CEP17 ratio ≥ 2.0) as performed at a central laboratory.

^b All cases in this category in Study 3 were IHC 2+.

^c Median follow-up duration of 12.6 months in the one-year trastuzumab treatment arm.

14.2 Metastatic Breast Cancer

The safety and efficacy of trastuzumab in treatment of women with metastatic breast cancer were studied in a randomized, controlled clinical trial in combination with chemotherapy (Study 5, n = 469 patients) and an open-label single agent clinical trial (Study 6, n = 222 patients). Both trials studied patients with metastatic breast cancer whose tumors overexpress the HER2 protein. Patients were eligible if they had 2 or 3 levels of overexpression (based on a 0 to 3 scale) by immunohistochemical assessment of tumor tissue performed by a central testing lab.

Previously Untreated Metastatic Breast Cancer (Study 5):

Study 5 was a multicenter, randomized, open-label clinical trial conducted in 469 women with metastatic breast cancer who had not been previously treated with chemotherapy for metastatic disease. Tumor specimens were tested by IHC (Clinical Trial Assay, CTA) and scored as 0, 1+, 2+, or 3+, with 3+ indicating the strongest positivity. Only patients with 2+ or 3+ positive tumors were eligible (about 33% of those screened). Patients were randomized to receive chemotherapy alone or in combination with trastuzumab given intravenously as a 4 mg/kg loading dose followed by weekly doses of trastuzumab at 2 mg/kg. For those who had received prior anthracycline therapy in the adjuvant setting, chemotherapy consisted of paclitaxel (175 mg/m² over 3 hours every 21 days for at least six cycles); for all other patients, chemotherapy consisted of anthracycline plus cyclophosphamide (AC: doxorubicin 60 mg/m² or epirubicin 75 mg/m² plus 600 mg/m² cyclophosphamide every 21 days for six cycles). Sixty-five percent of patients randomized to receive chemotherapy alone in this study received trastuzumab at the time of disease progression as part of a separate extension study.

Based upon the determination by an independent response evaluation committee, the patients randomized to trastuzumab and chemotherapy experienced a significantly longer median time to disease progression, a higher overall response rate (ORR), and a longer median duration of response as compared with patients randomized to chemotherapy alone. Patients randomized to trastuzumab and chemotherapy also had a longer median survival (see Table 11). These treatment effects were observed both in patients who received trastuzumab plus paclitaxel and in those who received trastuzumab plus AC; however the magnitude of the effects was greater in the paclitaxel subgroup.

Table 11
Study 5: Efficacy Results in
First-Line Treatment for Metastatic Breast Cancer

	Combined Results		Paclitaxel Subgroup		AC Subgroup	
	trastuzumab + All Chemo- therapy (n = 235)	All Chemo- therapy (n = 234)	trastuzumab + Paclitaxel (n = 92)	Paclitaxel (n = 96)	trastuzumab + AC ^a (n = 143)	AC (n = 138)
<u>Primary Endpoint</u>						
<u>Median</u>	7.2	4.5	6.7	2.5	7.6	5.7
<u>TTP(mos)^{b,c}</u>						
95% CI	7, 8	4, 5	5, 10	2, 4	7, 9	5, 7
p-value ^d	< 0.0001		< 0.0001		0.002	
<u>Secondary Endpoints</u>						
<u>Overall</u>	45	29	38	15	50	38
<u>Response</u>						
<u>Rate^b</u>						
95% CI	39, 51	23, 35	28, 48	8, 22	42, 58	30, 46
p-value ^e	< 0.0001		< 0.0001		0.10	
<u>Median Resp</u>	8.3	5.8	8.3	4.3	8.4	6.4
<u>Duration</u>						
<u>(mos)^{b,c}</u>						
25%, 75% Quartile	6, 15	4, 8	5, 11	4, 7	6, 15	4, 8
<u>Med Survival</u>	25.1	20.3	22.1	18.4	26.8	21.4
<u>(mos)^c</u>						
95% CI	22, 30	17, 24	17, 29	13, 24	23, 33	18, 27
p-value ^d	0.05		0.17		0.16	

^a AC = Anthracycline (doxorubicin or epirubicin) and cyclophosphamide.

^b Assessed by an independent Response Evaluation Committee.

^c Kaplan-Meier Estimate.

^d log-rank test.

^e χ^2 -test.

Data from Study 5 suggest that the beneficial treatment effects were largely limited to patients with the highest level of HER2 protein overexpression (3+) (see Table 12).

Table 12
Treatment Effects in Study 5 as a
Function of HER2 Overexpression or Amplification

HER2 Assay Result	Number of Patients (N)	Relative Risk ^b for Time to Disease Progression (95% CI)	Relative Risk ^b for Mortality (95% CI)
CTA 2+ or 3+	469	0.49 (0.40, 0.61)	0.80 (0.64, 1.00)
FISH (+) ^a	325	0.44 (0.34, 0.57)	0.70 (0.53, 0.91)
FISH (-) ^a	126	0.62 (0.42, 0.94)	1.06 (0.70, 1.63)
CTA 2+	120	0.76 (0.50, 1.15)	1.26 (0.82, 1.94)
FISH (+)	32	0.54 (0.21, 1.35)	1.31 (0.53, 3.27)
FISH (-)	83	0.77 (0.48, 1.25)	1.11 (0.68, 1.82)
CTA 3+	349	0.42 (0.33, 0.54)	0.70 (0.51, 0.90)
FISH (+)	293	0.42 (0.32, 0.55)	0.67 (0.51, 0.89)
FISH (-)	43	0.43 (0.20, 0.94)	0.88 (0.39, 1.98)

^a FISH testing results were available for 451 of the 469 patients enrolled on study.

^b The relative risk represents the risk of progression or death in the trastuzumab plus chemotherapy arm versus the chemotherapy arm.

Previously Treated Metastatic Breast Cancer (Study 6):

Trastuzumab was studied as a single agent in a multicenter, open-label, single-arm clinical trial (Study 6) in patients with HER2 overexpressing metastatic breast cancer who had relapsed following one or two prior chemotherapy regimens for metastatic disease. Of 222 patients enrolled, 66% had received prior adjuvant chemotherapy, 68% had received two prior chemotherapy regimens for metastatic disease, and 25% had received prior myeloablative treatment with hematopoietic rescue. Patients were treated with a loading dose of 4 mg/kg IV followed by weekly doses of trastuzumab at 2 mg/kg IV.

The ORR (complete response + partial response), as determined by an independent Response Evaluation Committee, was 14%, with a 2% complete response rate and a 12% partial response rate. Complete responses were observed only in patients with disease limited to skin and lymph nodes. The overall response rate in patients whose tumors tested as CTA 3+ was 18% while in those that tested as CTA 2+, it was 6%.

14.3 Metastatic Gastric Cancer

The safety and efficacy of trastuzumab in combination with cisplatin and a fluoropyrimidine (capecitabine or 5-fluorouracil) were studied in patients previously untreated for metastatic gastric or gastroesophageal junction adenocarcinoma (Study 7). In this open-label, multi-center trial, 594 patients were randomized 1:1 to trastuzumab in combination with cisplatin and a fluoropyrimidine (FC+H) or chemotherapy alone (FC). Randomization was stratified by extent of disease (metastatic vs. locally advanced), primary site (gastric vs. gastroesophageal junction), tumor measurability (yes vs. no), ECOG performance status (0,1 vs. 2), and fluoropyrimidine (capecitabine vs. 5-fluorouracil). All patients were either HER2 gene amplified (FISH+) or HER2

overexpressing (IHC 3+). Patients were also required to have adequate cardiac function (e.g., LVEF > 50%).

On the trastuzumab-containing arm, trastuzumab was administered as an IV infusion at an initial dose of 8 mg/kg followed by 6 mg/kg every 3 weeks until disease progression. On both study arms cisplatin was administered at a dose of 80 mg/m² Day 1 every 3 weeks for 6 cycles as a 2 hour IV infusion. On both study arms, capecitabine was administered at 1000 mg/m² dose orally twice daily (total daily dose 2000 mg/m²) for 14 days of each 21 day cycle for 6 cycles. Alternatively, continuous intravenous infusion (CIV) 5-fluorouracil was administered at a dose of 800 mg/m²/day from Day 1 through Day 5 every three weeks for 6 cycles.

The median age of the study population was 60 years (range: 21-83); 76% were male; 53% were Asian, 38% Caucasian, 5% Hispanic, 5% other racial/ethnic groups; 91% had ECOG PS of 0 or 1; 82% had primary gastric cancer and 18% had primary gastroesophageal adenocarcinoma. Of these patients, 23% had undergone prior gastrectomy, 7% had received prior neoadjuvant and/or adjuvant therapy, and 2% had received prior radiotherapy.

The main outcome measure of Study 7 was overall survival (OS), analyzed by the unstratified log-rank test. The final OS analysis based on 351 deaths was statistically significant (nominal significance level of 0.0193). An updated OS analysis was conducted at one year after the final analysis. The efficacy results of both the final and the updated analyses are summarized in Table 13 and Figure 7.

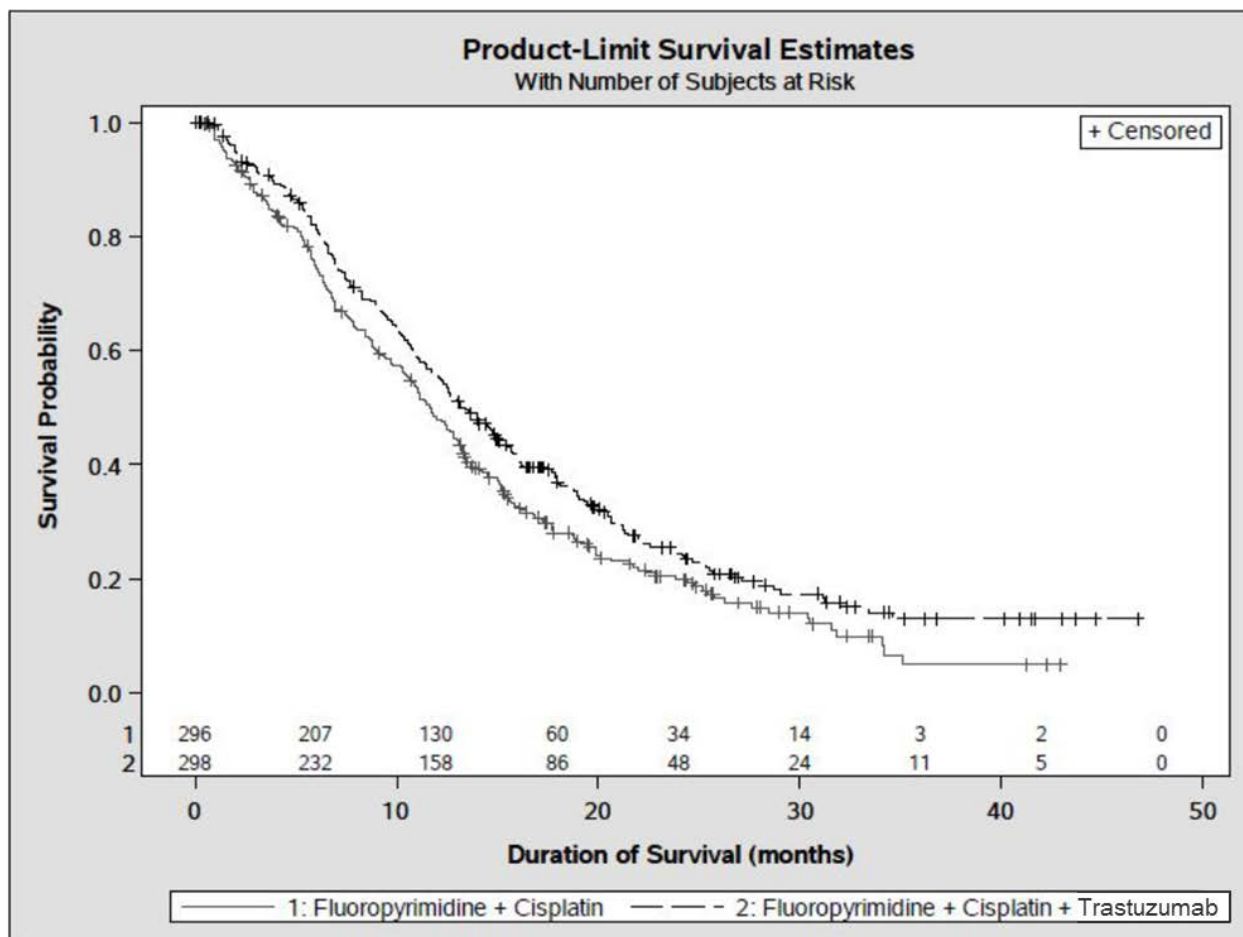
Table 13
Study 7: Overall Survival in ITT Population

	FC Arm N = 296	FC + H Arm N = 298
<u>Definitive (Second Interim) Overall Survival</u>		
No. Deaths (%)	184 (62.2%)	167 (56.0%)
Median	11.0	13.5
95% CI (mos.)	(9.4, 12.5)	(11.7, 15.7)
Hazard Ratio		0.73
95% CI		(0.60, 0.91)
p-value*, two-sided		0.0038
<u>Updated Overall Survival</u>		
No. Deaths (%)	227 (76.7%)	221 (74.2%)
Median	11.7	13.1
95% CI (mos.)	(10.3, 13.0)	(11.9, 15.1)
Hazard Ratio		0.80
95% CI		(0.67, 0.97)

*Comparing with the nominal significance level of 0.0193.

Figure 7

Updated Overall Survival in Patients with Metastatic Gastric Cancer (Study 7)



An exploratory analysis of OS in patients based on HER2 gene amplification (FISH) and protein overexpression (IHC) testing is summarized in Table 14.

Table 14
Exploratory Analyses by HER2 Status Using Updated Overall Survival Results

	FC (N = 296) ^a	FC+H (N = 298) ^b
<u>FISH+ / IHC 0, 1+ subgroup (N=133)</u>		
No. Deaths (%) / n (%)	57/71 (80%)	56/62 (90%)
Median OS Duration (mos.)	8.8	8.3
95% CI (mos.)	(6.4, 11.7)	(6.2, 10.7)
Hazard ratio (95% CI)	1.33 (0.92, 1.92)	
<u>FISH+ / IHC2+ subgroup (N=160)</u>		
No. Deaths (%) / n (%)	65/80 (81%)	64/80 (80%)
Median OS Duration (mos.)	10.8	12.3
95% CI (mos.)	(6.8, 12.8)	(9.5, 15.7)
Hazard ratio (95% CI)	0.78 (0.55, 1.10)	
<u>FISH+ or FISH- / IHC3+^c subgroup (N=294)</u>		
No. Deaths (%) / n (%)	104/143 (73%)	96/151 (64%)
Median OS Duration (mos.)	13.2	18.0
95% CI (mos.)	(11.5, 15.2)	(15.5, 21.2)
Hazard ratio (95% CI)	0.66 (0.50, 0.87)	

^a Two patients on the FC arm who were FISH+ but IHC status unknown were excluded from the exploratory subgroup analyses.

^b Five patients on the trastuzumab-containing arm who were FISH+, but IHC status unknown were excluded from the exploratory subgroup analyses.

^c Includes 6 patients on chemotherapy arm, 10 patients on trastuzumab arm with FISH-, IHC3+ and 8 patients on chemotherapy arm, 8 patients on trastuzumab arm with FISH status unknown, IHC 3+.

16 HOW SUPPLIED/STORAGE AND HANDLING

16.1 How Supplied

420 mg Multiple-dose vial

Ontruzant (trastuzumab-dttb) for injection 420 mg/vial is supplied in a multiple-dose vial as a white to pale yellow lyophilized sterile powder, under vacuum. Each carton contains one multiple-dose vial of Ontruzant and one vial (20 mL) of Bacteriostatic Water for Injection (BWFI), USP, containing 1.1% benzyl alcohol as a preservative.

NDC 0006-5034-02.

150 mg Single-dose vial

Ontruzant (trastuzumab-dttb) for injection 150 mg/vial is supplied in a single-dose vial as a white to pale yellow lyophilized sterile powder, under vacuum. Each carton contains one single-dose vial of Ontruzant.

NDC 0006-5033-02.

16.2 Storage

Store Ontruzant vials in the refrigerator at 2° to 8°C (36° to 46°F) until time of reconstitution.

17 PATIENT COUNSELING INFORMATION

Cardiomyopathy

- Advise patients to contact a health care professional immediately for any of the following: new onset or worsening shortness of breath, cough, swelling of the ankles/legs, swelling of the face, palpitations, weight gain of more than 5 pounds in 24 hours, dizziness or loss of consciousness [*see Boxed Warning: Cardiomyopathy*].

Embryo-Fetal Toxicity

- Advise pregnant women and females of reproductive potential that Ontruzant exposure during pregnancy or within 7 months prior to conception can result in fetal harm. Advise female patients to contact their healthcare provider with a known or suspected pregnancy [*see Use in Specific Populations (8.1)*].
- Advise females of reproductive potential to use effective contraception during treatment and for 7 months following the last dose of Ontruzant [*see Use in Specific Populations (8.3)*].

Ontruzant [trastuzumab-dttb]

SAMSUNG

BIOEPIS

Manufactured by:

Samsung Bioepis Co., Ltd., 107, Cheomdan-daero, Yeonsu-gu, Incheon, 21987, Republic of Korea
U.S. License No. 2046



Manufactured for:

Merck Sharp & Dohme Corp., a subsidiary of **Merck & Co., Inc.**, Whitehouse Station, NJ 08889,
USA

Ontruzant is a trademark of Merck Sharp & Dohme Corp., a subsidiary of **Merck & Co., Inc.**

Product of Denmark